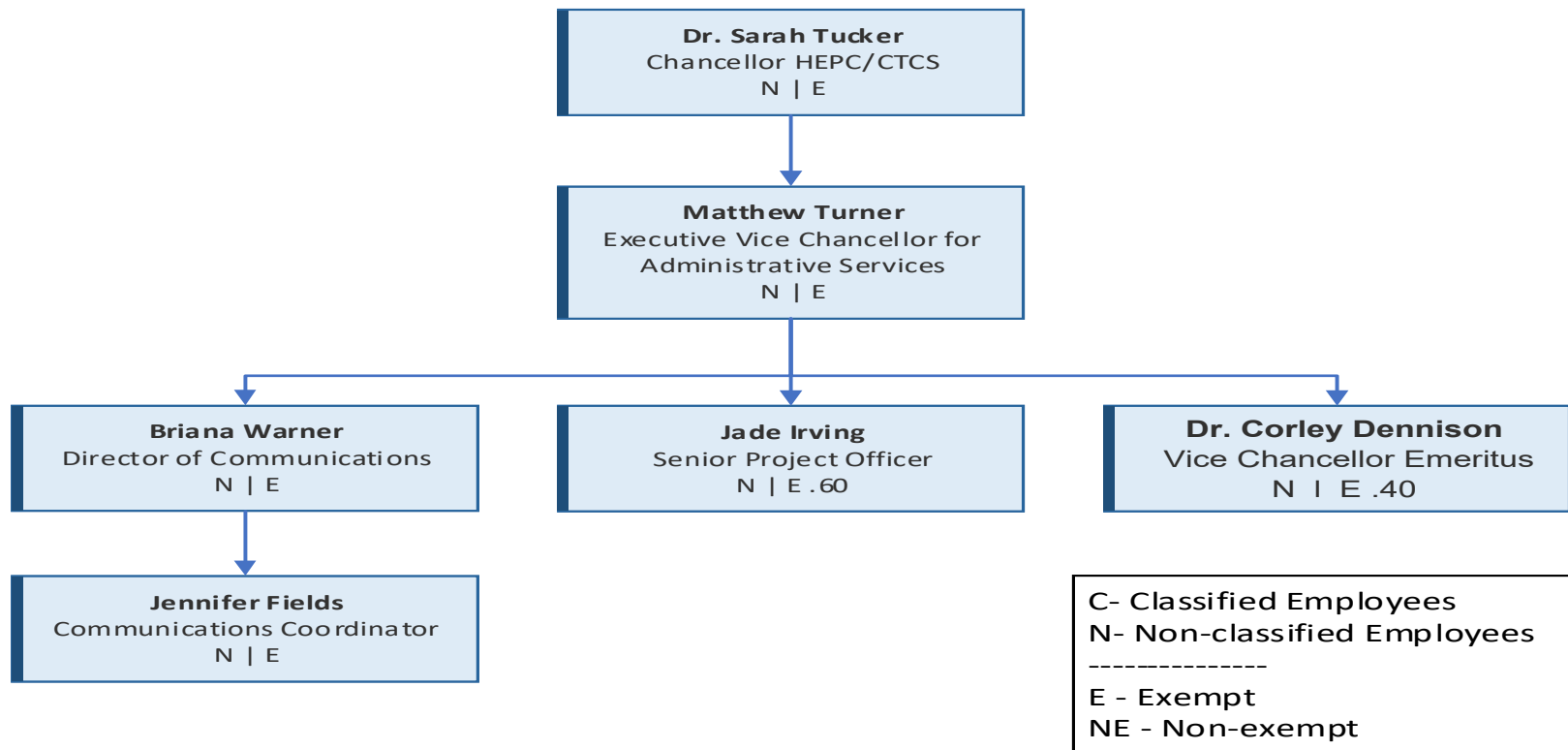
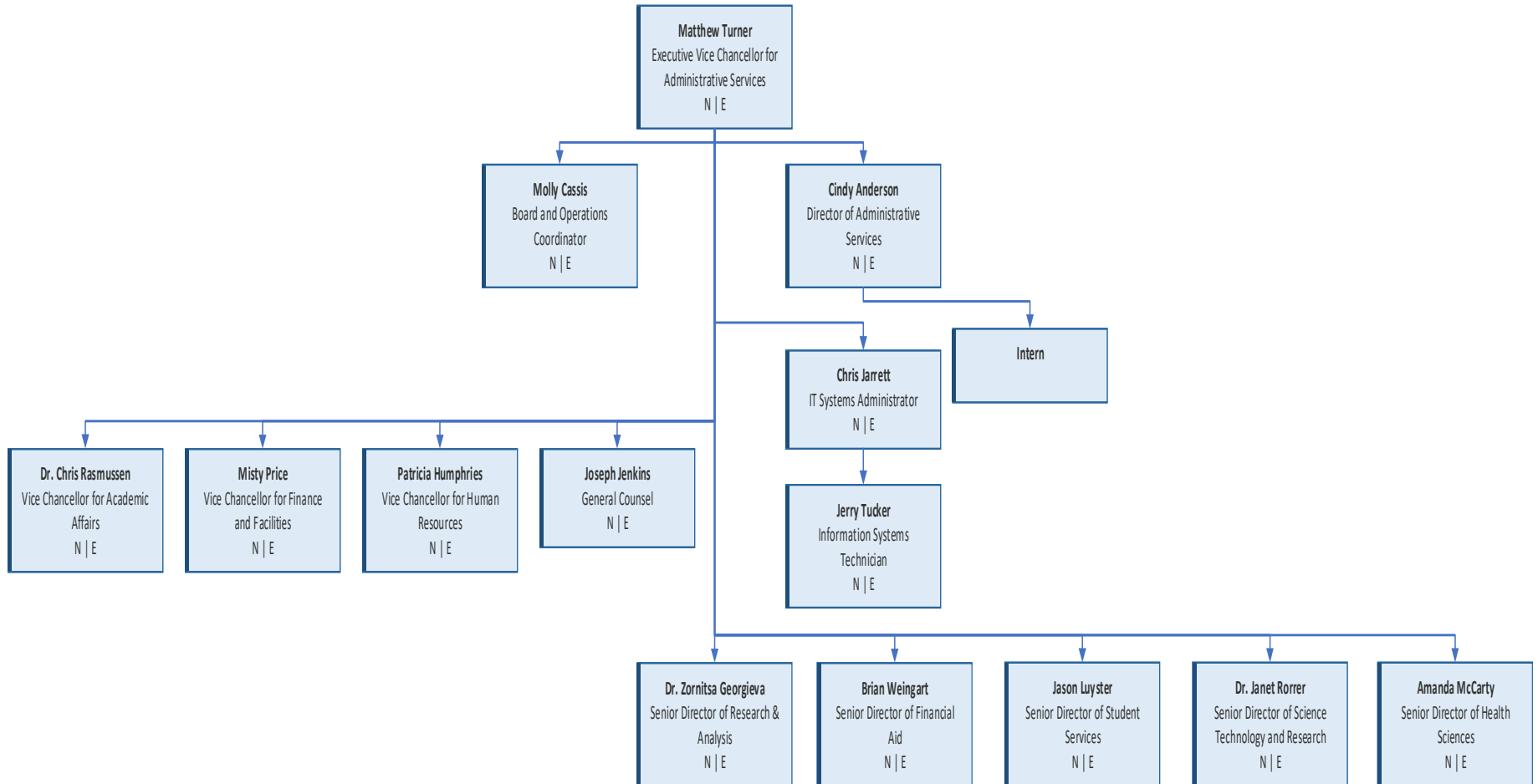


West Virginia Higher Education Policy Commission

Chancellor's Office



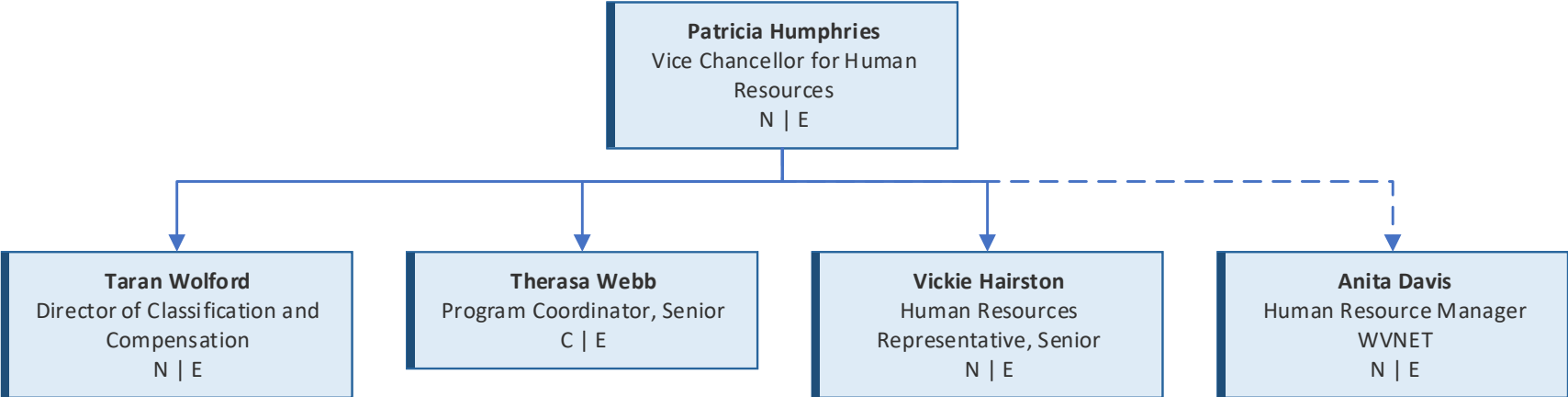
Administrative Services Division



C - Classified Employees
 N - Non-classified Employees

 E - Exempt
 NE - Non-exempt

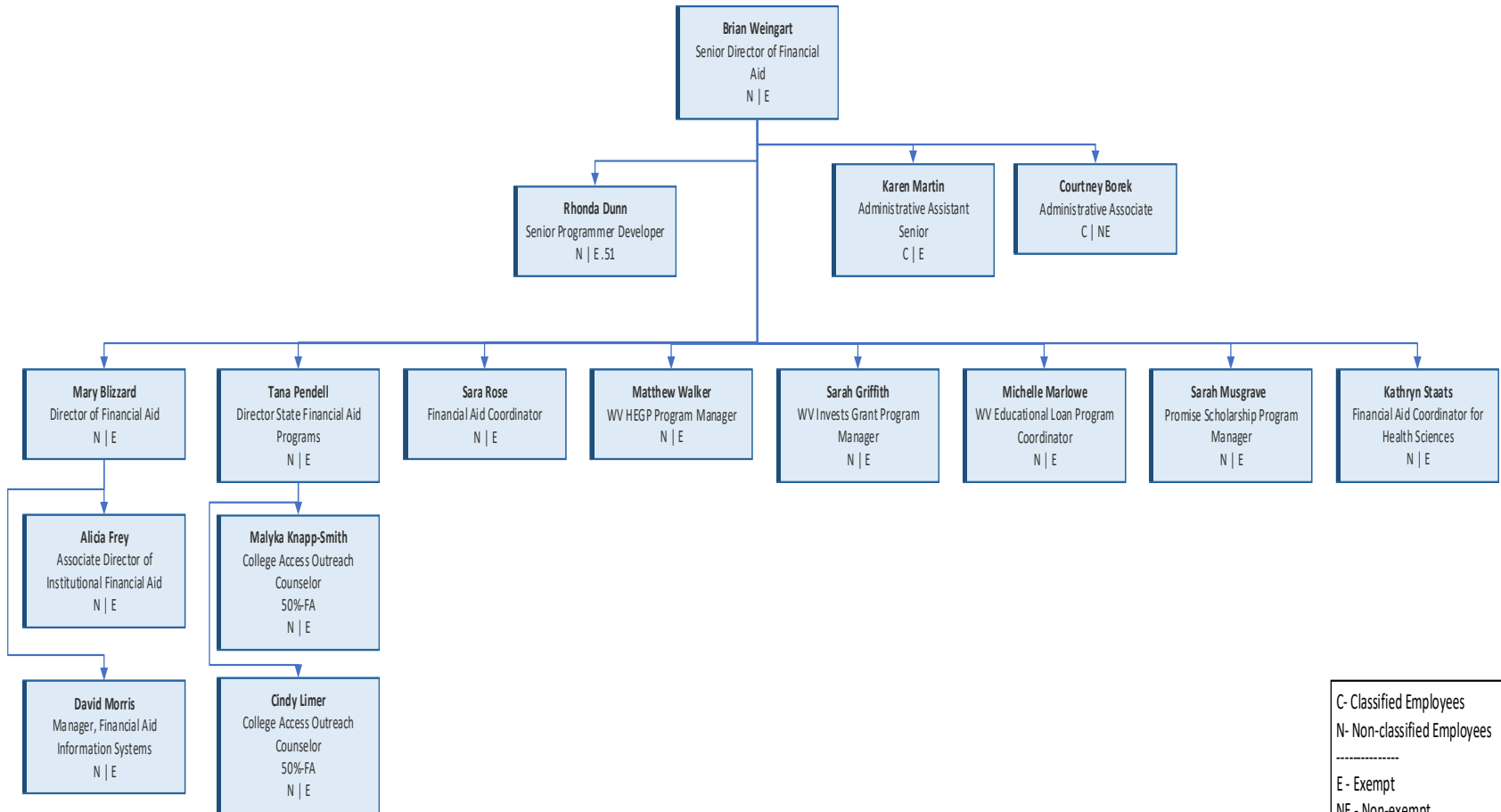
Division of Human Resources



C- Classified Employees
N- Non-classified Employees

E - Exempt
NE - Non-exempt

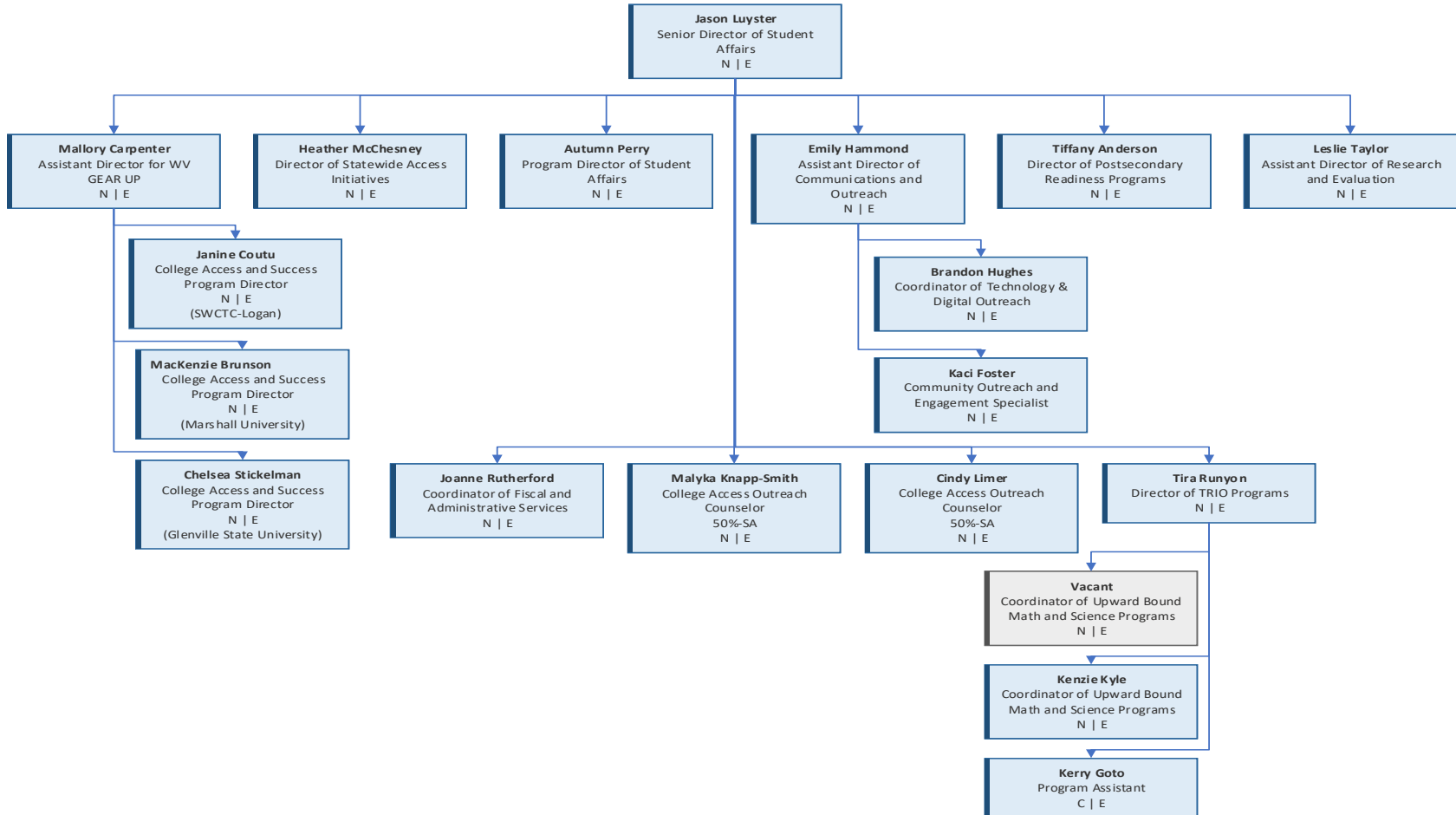
Division of Financial Aid



C - Classified Employees
 N - Non-classified Employees

 E - Exempt
 NE - Non-exempt

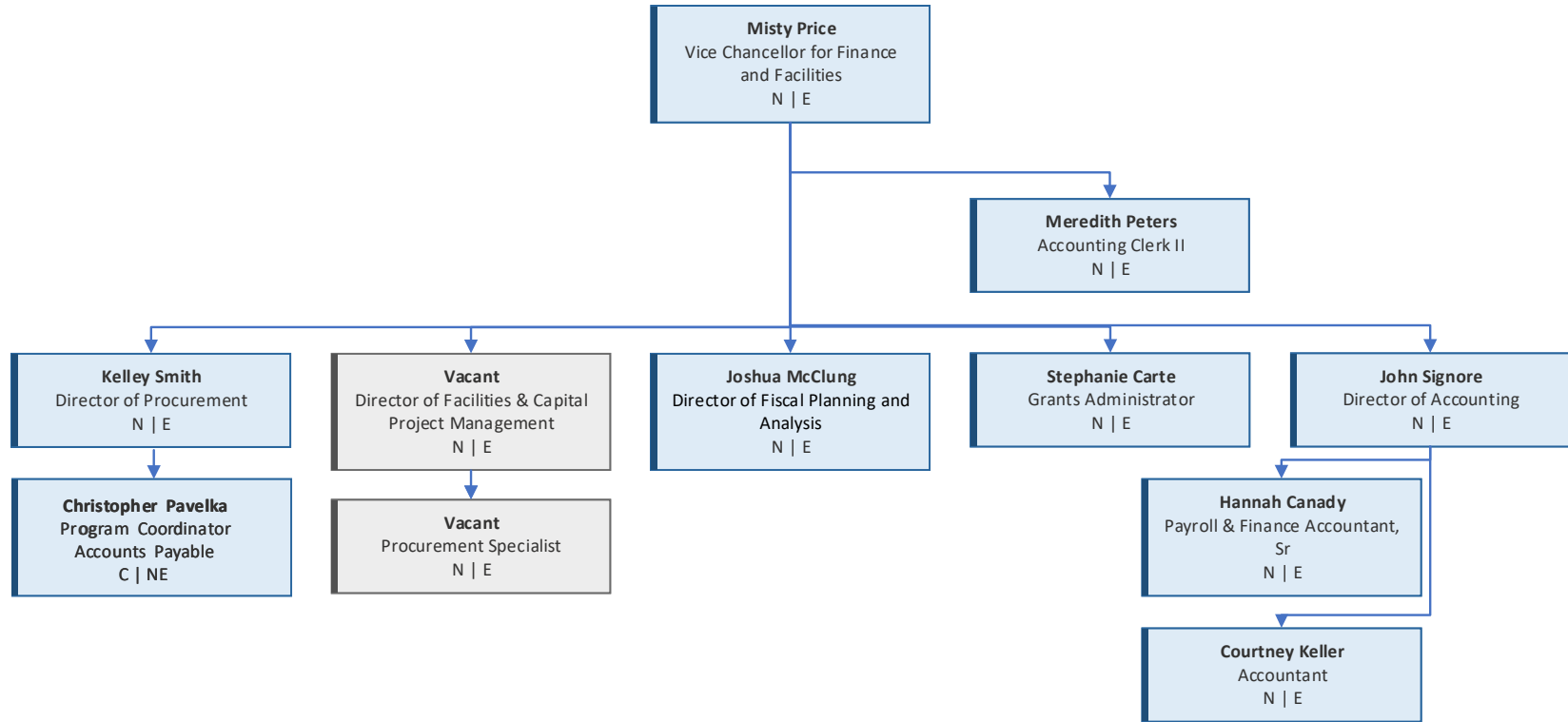
Division of Student Affairs



C- Classified Employees
 N- Non-classified Employees

 E - Exempt
 NE - Non-exempt

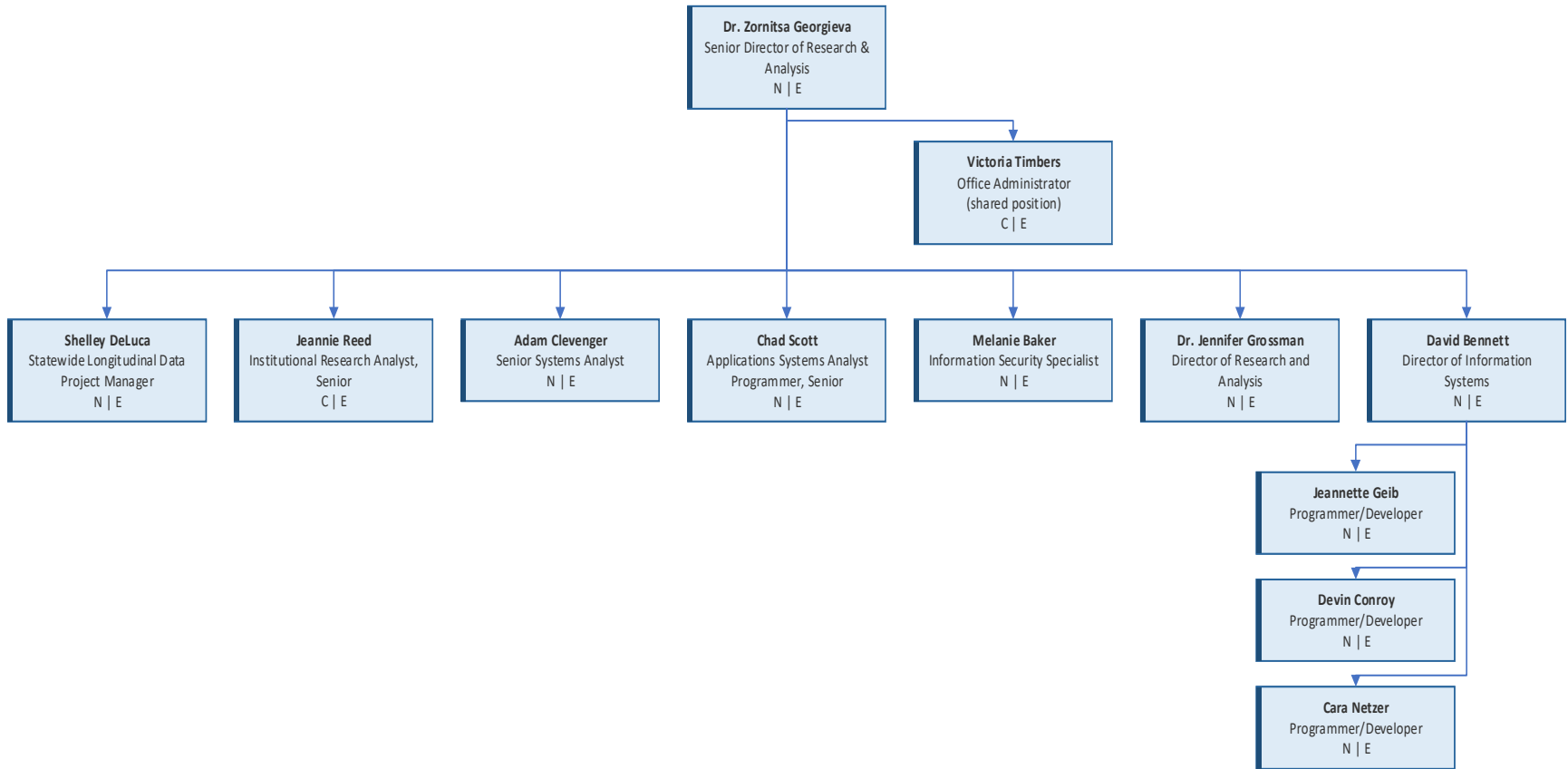
Division of Finance & Facilities



C- Classified Employees
 N- Non-classified Employees

 E - Exempt
 NE - Non-exempt

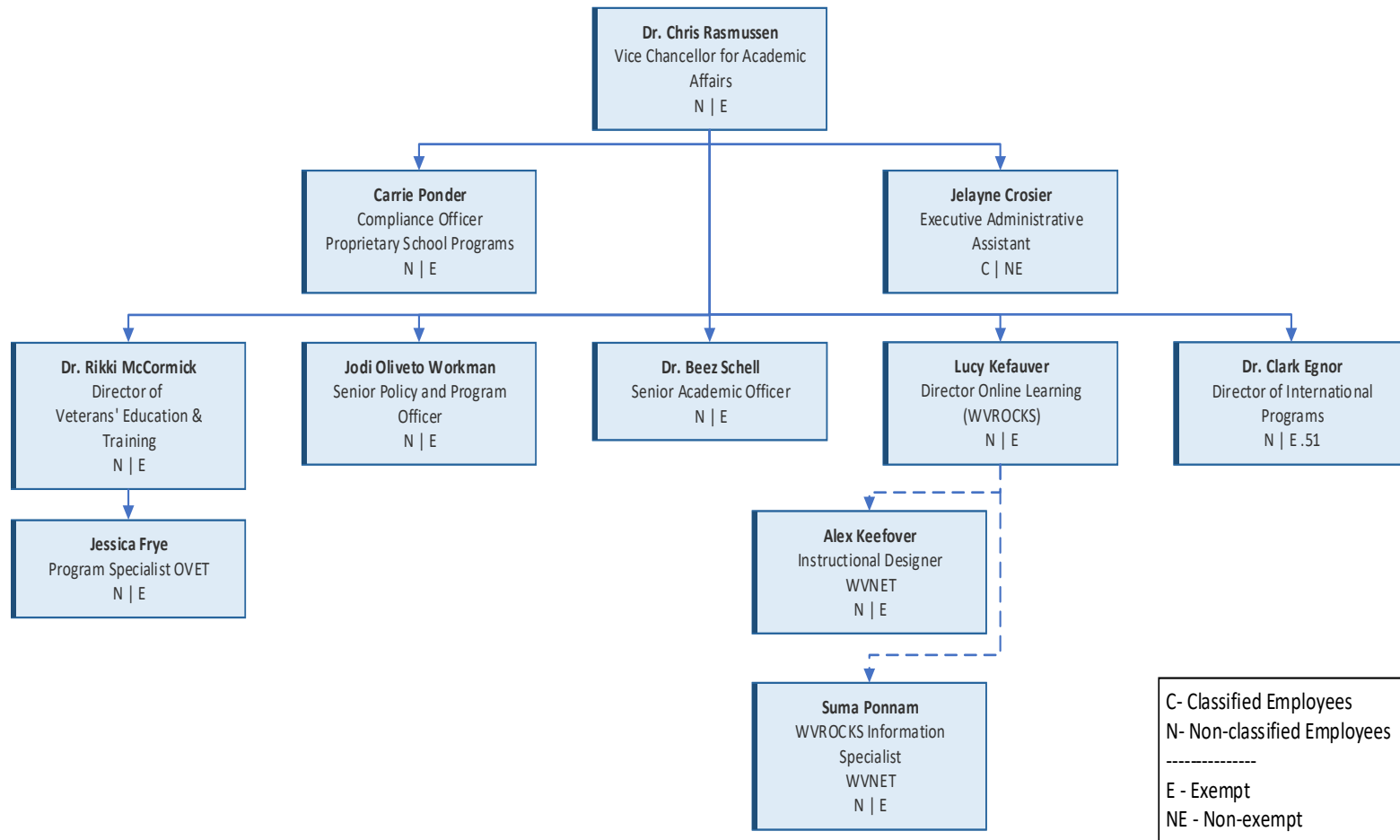
Division of Research and Analysis



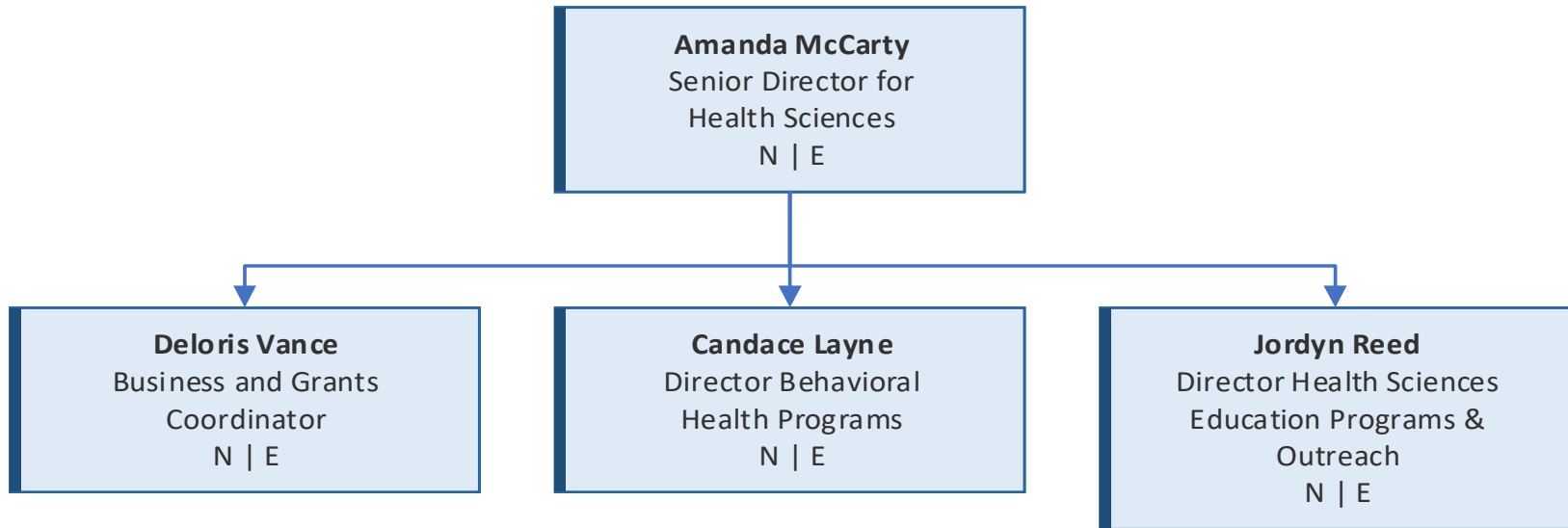
C- Classified Employees
N- Non-classified Employees

E - Exempt
NE - Non-exempt

Division of Academic Affairs



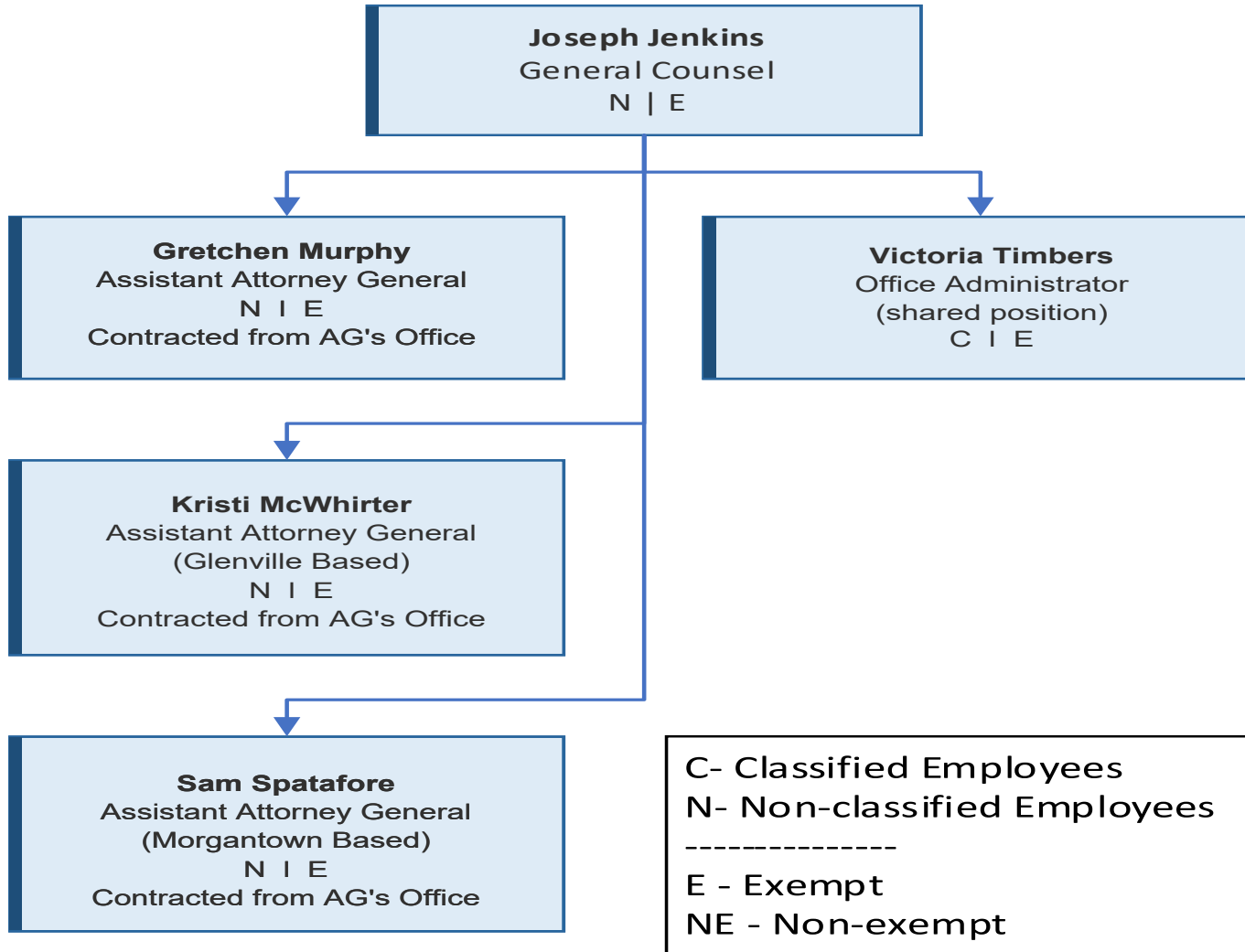
Division of Health Sciences



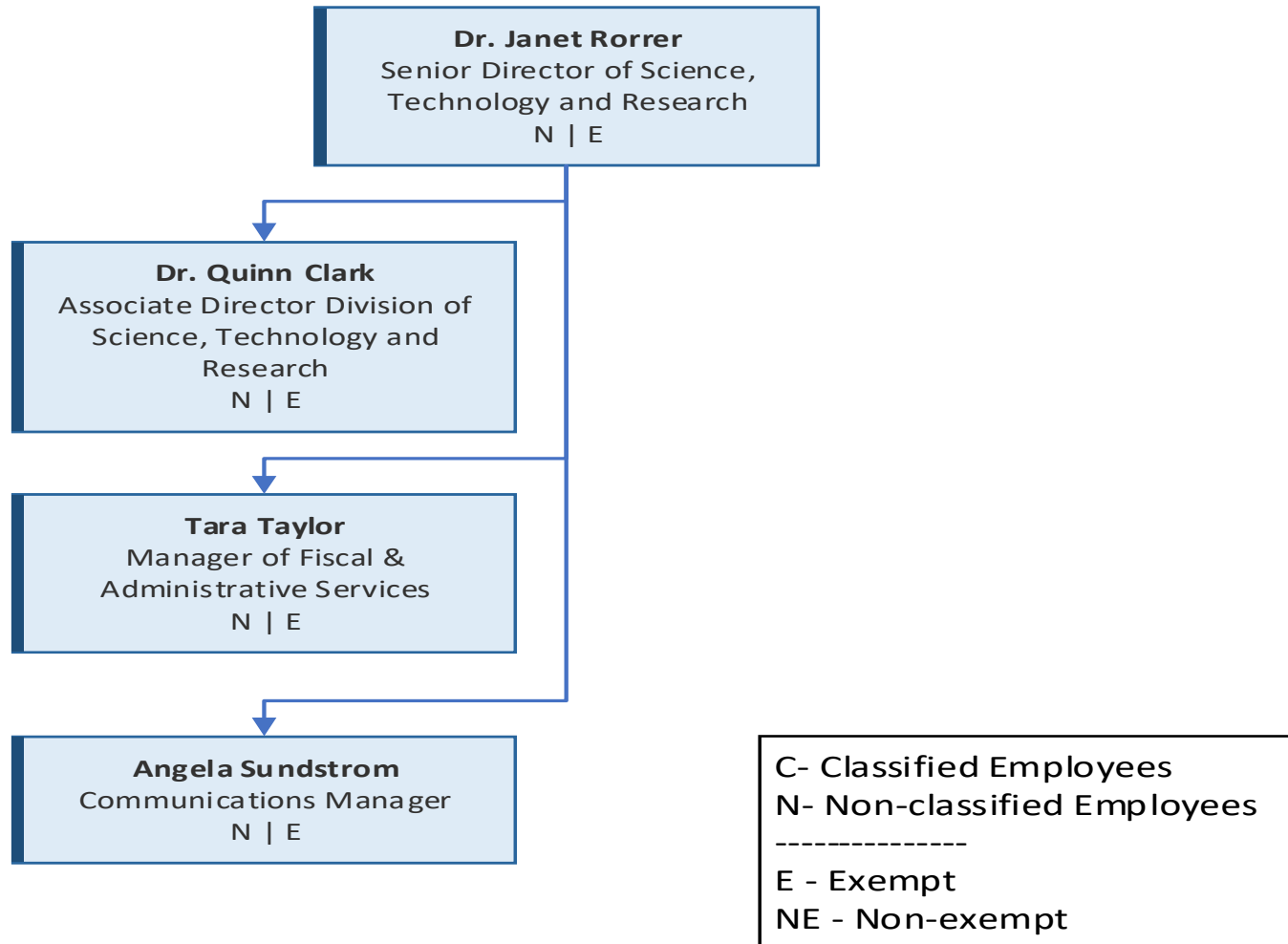
C- Classified Employees
N- Non-classified Employees

E - Exempt
NE - Non-exempt

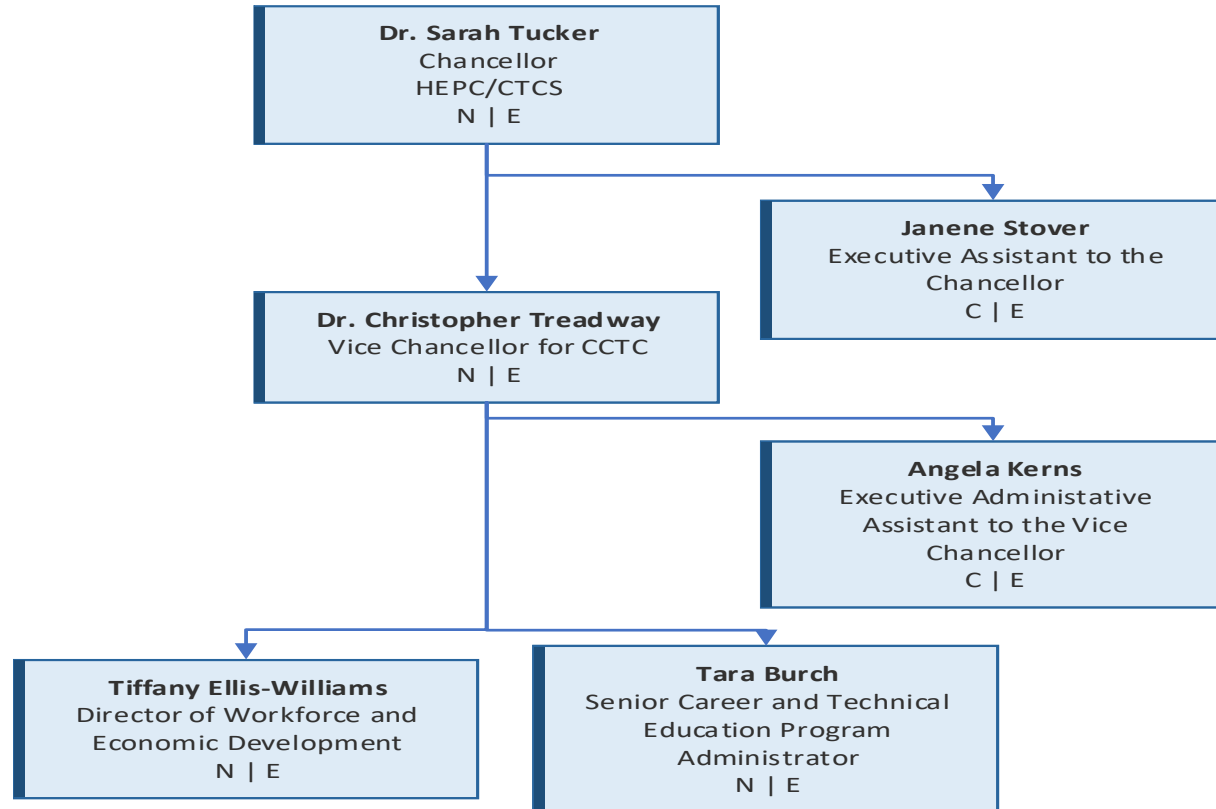
Legal Division



STaR Division: SCIENCE, TECHNOLOGY AND RESEARCH



WV Council for Community and Technical College Education



C- Classified Employees
N- Non-classified Employees

E - Exempt
NE - Non-exempt