



**NEW RIVER C & TC – ATC RENOVATION
OMNI ASSOCIATES-ARCHITECTS**

**ADDENDUM NO. 3
4/24/26**

To: ALL BIDDERS

Ref: **NEW RIVER C & TC – GHENT ATC RENOVATION**

Subj.: ADDENDUM BULLETIN NO. 3

This Addendum Bulletin shall be incorporated in the Construction Documents including the Drawings and Specifications for the Project referenced above. All work amended as listed herein shall be included in your Bid Proposal and the bidder shall acknowledge this addendum bulletin on the Bid Form. The work shall be amended as follows:

SPECIFICATIONS

1. **101419 Dimensional Letter Signage:** ADD section in its entirety, see Enclosures.

DRAWINGS:

1. **A-1.1:** REPLACE sheet in its entirety, see Enclosures. Revisions related to locating IT & Utility Rooms.
2. **MP-1.1r:** REPLACE sheet MP-1.1 in its entirety, see Enclosures. Updates have been clouded and tagged. Revisions related to addition of cooling unit in Vestibule.
3. **E-2.1r:** REPLACE sheet E-2.1 in its entirety, see Enclosures. Updates have been clouded and tagged. Revisions related to electrical runs for gate and signage.
4. **E-3.1r:** REPLACE sheet E-3.1 in its entirety, see Enclosures. Updates have been clouded and tagged. Revisions related to electrical run of cooling unit.

FOR CLARIFICATION:

- a. Bid date changed to Friday May 08, 2026 @ 11am.
- b. Final day for questions changed to Friday May 01, 2026 @ 12pm
- c. IT and Utility rooms shown on sheet A-1.1 for location information only. No architectural work is anticipated in these locations.
- d. Questions submitted via the Bid Phase RFI Portal are all reviewed. If your question has not been included in the Bid Phase RFI Log (see Enclosures), it is still under review.

END OF ADDENDUM

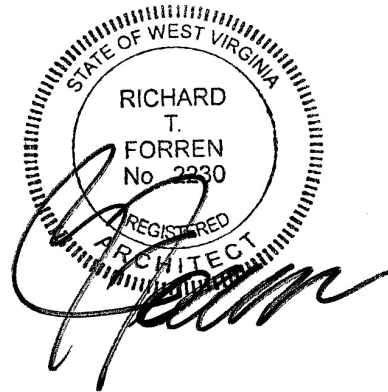


**NEW RIVER C & TC – ATC RENOVATION
OMNI ASSOCIATES-ARCHITECTS**

**ADDENDUM NO. 3
4/24/26**

Submitted by:
THE OMNI ASSOCIATES – ARCHITECTS, INC.

Richard T. Forren, AIA
Principal



Enclosures:

- A 101419 Dimensional Letter Signage Spec
- B Bid Phase RFI Log
- C Sheet A-1.1
- D Sheet MP-1.1r
- E Sheet E-2.1r
- F Sheet E-3.1r

SECTION 101419 - DIMENSIONAL LETTER SIGNAGE

PART 1 - GENERAL

1.1 SUMMARY

- A. Section Includes:
 - 1. Dimensional characters.
 - a. Cast dimensional characters.

1.2 DEFINITIONS

- A. Illuminated: Illuminated by lighting source integrally constructed as part of the sign unit.

1.3 ACTION SUBMITTALS

- A. Product Data: For each type of product.
- B. Shop Drawings: For signs.
 - 1. Include fabrication and installation details and attachments to other work.
 - 2. Show sign mounting heights, locations of supplementary supports to be provided by other installers, and accessories.
 - 3. Show message list, typestyles, graphic elements, and layout for each sign at least half size.
- C. Samples for Initial Selection: For each type of sign assembly, exposed component, and exposed finish.
 - 1. Include representative Samples of available typestyles and graphic symbols.
- D. Samples for Verification: For each type of sign assembly showing all components and with the required finish(es), in manufacturer's standard size unless otherwise indicated and as follows:
 - 1. Dimensional Characters: Full-size Sample of each type of dimensional character.
 - 2. Exposed Accessories: Full-size Sample of each accessory type.
 - 3. Full-size Samples, if approved, will be returned to Contractor for use in the Project.
- E. Product Schedule: For dimensional letter signs. Use same designations indicated on Drawings or specified.

1.4 INFORMATIONAL SUBMITTALS

- A. Qualification Data: For Installer and manufacturer.
- B. Sample Warranty: For special warranty.

1.5 CLOSEOUT SUBMITTALS

- A. Maintenance Data: For signs to include in maintenance manuals.

1.6 QUALITY ASSURANCE

- A. Installer Qualifications: An entity that employs installers and supervisors who are trained and approved by manufacturer.

1.7 FIELD CONDITIONS

- A. Field Measurements: Verify locations of electrical service embedded in permanent construction by other installers by field measurements before fabrication, and indicate measurements on Shop Drawings.

1.8 WARRANTY

- A. Special Warranty: Manufacturer agrees to repair or replace components of signs that fail in materials or workmanship within specified warranty period.
 - 1. Failures include, but are not limited to, the following:
 - a. Deterioration of finishes beyond normal weathering.
 - b. Separation or delamination of sheet materials and components.
 - 2. Warranty Period: Five years from date of Substantial Completion.

PART 2 - PRODUCTS

2.1 PERFORMANCE REQUIREMENTS

- A. Thermal Movements: For exterior fabricated channel dimensional characters, allow for thermal movements from ambient and surface temperature changes.
 - 1. Temperature Change: 120 deg F (67 deg C), ambient; 180 deg F (100 deg C), material surfaces.
- B. Electrical Components, Devices, and Accessories: Listed and labeled as defined in NFPA 70, by a qualified testing agency, and marked for intended location and application.

2.2 DIMENSIONAL CHARACTERS

- A. Cast Characters: Characters with uniform faces, sharp corners, and precisely formed lines and profiles, and as follows:
1. **Manufacturers:** Subject to compliance with requirements, available manufacturers offering products that may be incorporated into the Work include, but are not limited to the following:
 - a. [A.R.K. Ramos.](#)
 - b. [ASI Sign Systems, Inc.](#)
 - c. [Gemini Signage; Gemini, Inc.](#)
 2. Character Material: Cast aluminum.
 3. Character Height: As indicated on Drawings.
 4. Thickness: Manufacturer's standard for size of character.
 5. Finishes:
 - a. Integral Aluminum Finish: Anodized color as selected by Architect from full range of industry colors and color densities.
 - b. Overcoat: Manufacturer's standard baked-on clear coating.
 6. Mounting: Projecting studs.
 7. Typeface: As selected by Architect from manufacturer's full rang.

2.3 DIMENSIONAL CHARACTER MATERIALS

- A. Aluminum Castings: ASTM B26/B26M, alloy and temper recommended by sign manufacturer for casting process used and for type of use and finish indicated.
- B. Aluminum Sheet and Plate: **ASTM B209** (**ASTM B209M**), alloy and temper recommended by aluminum producer and finisher for type of use and finish indicated.
- C. Aluminum Extrusions: **ASTM B221** (**ASTM B221M**), alloy and temper recommended by aluminum producer and finisher for type of use and finish indicated.
- D. Paints and Coatings for Sheet Materials: Inks, dyes, and paints that are recommended by manufacturer for optimum adherence to surface and are UV and water resistant for colors and exposure indicated.

2.4 ACCESSORIES

- A. Fasteners and Anchors: Manufacturer's standard as required for secure anchorage of signs, noncorrosive and compatible with each material joined, and complying with the following:
1. Use concealed fasteners and anchors unless indicated to be exposed.
 2. For exterior exposure, furnish stainless steel devices unless otherwise indicated.
 3. Exposed Metal-Fastener Components, General:

- a. Fabricated from same basic metal and finish of fastened metal unless otherwise indicated.
 - b. Fastener Heads: For nonstructural connections, use oval countersunk screws and bolts with tamper-resistant one-way-head slots unless otherwise indicated.
4. Sign Mounting Fasteners:
- a. Projecting Studs: Threaded studs with sleeve spacer, welded or brazed to back of sign material, screwed into back of sign assembly, or screwed into tapped lugs cast integrally into back of cast sign material, unless otherwise indicated.
- B. Adhesive: As recommended by sign manufacturer.
- C. Two-Face Tape: Manufacturer's standard high-bond, foam-core tape, 0.045 inch (1.14 mm) thick, with adhesive on both sides.
- D. Bituminous Paint: Cold-applied asphalt emulsion complying with ASTM D1187/D1187M.

2.5 FABRICATION

- A. General: Provide manufacturer's standard sign assemblies according to requirements indicated.
- 1. Preassemble signs and assemblies in the shop to greatest extent possible. Disassemble signs and assemblies only as necessary for shipping and handling limitations. Clearly mark units for reassembly and installation; apply markings in locations concealed from view after final assembly.
 - 2. Mill joints to a tight, hairline fit. Form assemblies and joints exposed to weather to resist water penetration and retention.
 - 3. Comply with AWS for recommended practices in welding and brazing. Provide welds and brazes behind finished surfaces without distorting or discoloring exposed side. Clean exposed welded and brazed connections of flux, and dress exposed and contact surfaces.
 - 4. Conceal connections if possible; otherwise, locate connections where they are inconspicuous.
 - 5. Internally brace dimensional characters for stability, to meet structural performance loading without oil-canning or other surface deformation, and for securing fasteners.
 - 6. Provide rabbets, lugs, and tabs necessary to assemble components and to attach to existing work. Drill and tap for required fasteners. Use concealed fasteners where possible; use exposed fasteners that match sign finish.
 - 7. Castings: Fabricate castings free of warp, cracks, blowholes, pits, scale, sand holes, and other defects that impair appearance or strength. Grind, wire brush, sandblast, and buff castings to remove seams, gate marks, casting flash, and other casting marks before finishing.

- B. Brackets: Fabricate brackets, fittings, and hardware for bracket-mounted signs to suit sign construction and mounting conditions indicated. Modify manufacturer's standard brackets as required.
 - 1. Aluminum Brackets: Factory finish brackets with baked-enamel or powder-coat finish to match sign-background color unless otherwise indicated.
 - 2. Stainless Steel Brackets: Factory finish brackets to match sign background finish unless otherwise indicated.

2.6 GENERAL FINISH REQUIREMENTS

- A. Protect mechanical finishes on exposed surfaces from damage by applying a strippable, temporary protective covering before shipping.
- B. Appearance of Finished Work: Noticeable variations in same piece are not acceptable. Variations in appearance of adjoining components are acceptable if they are within the range of approved Samples and are assembled or installed to minimize contrast.
- C. Directional Finishes: Run grain with long dimension of each piece and perpendicular to long dimension of finished trim or border surface unless otherwise indicated.
- D. Organic, Anodic, and Chemically Produced Finishes: Apply to formed metal after fabrication but before applying contrasting polished finishes on raised features unless otherwise indicated.

2.7 ALUMINUM FINISHES

- A. Clear Anodic Finish: AAMA 611, Class I, 0.018 mm or thicker.
- B. Color Anodic Finish: AAMA 611, Class I, 0.018 mm or thicker.
- C. Baked-Enamel or Powder-Coat Finish: AAMA 2603 except with a minimum dry film thickness of **1.5 mils (0.04 mm)**. Comply with coating manufacturer's written instructions for cleaning, conversion coating, and applying and baking finish.

PART 3 - EXECUTION

3.1 EXAMINATION

- A. Examine substrates, areas, and conditions, with Installer present, for compliance with requirements for installation tolerances and other conditions affecting performance.
- B. Verify that sign-support surfaces are within tolerances to accommodate signs without gaps or irregularities between backs of signs and support surfaces unless otherwise indicated.
- C. Verify that electrical service is correctly sized and located to accommodate signs.

- D. Proceed with installation only after unsatisfactory conditions have been corrected.

3.2 INSTALLATION OF DIMENSIONAL CHARACTERS

- A. General: Install signs using mounting methods indicated and according to manufacturer's written instructions.
 - 1. Install signs level, plumb, true to line, and at locations and heights indicated, with sign surfaces free of distortion and other defects in appearance.
 - 2. Before installation, verify that sign surfaces are clean and free of materials or debris that would impair installation.
 - 3. Corrosion Protection: Coat concealed surfaces of exterior aluminum in contact with grout, concrete, masonry, wood, or dissimilar metals, with a heavy coat of bituminous paint.
- B. Mounting Methods:
 - 1. Projecting Studs: Using a template, drill holes in substrate aligning with studs on back of sign. Remove loose debris from hole and substrate surface.
 - a. Masonry Substrates: Fill holes with adhesive. Leave recess space in hole for displaced adhesive. Place spacers on studs, place sign in position, and push until spacers are pinched between sign and substrate, embedding the stud ends in holes. Temporarily support sign in position until adhesive fully sets.
 - b. Thin or Hollow Surfaces: Place spacers on studs, place sign in position with spacers pinched between sign and substrate, and install washers and nuts on stud ends projecting through opposite side of surface, and tighten.

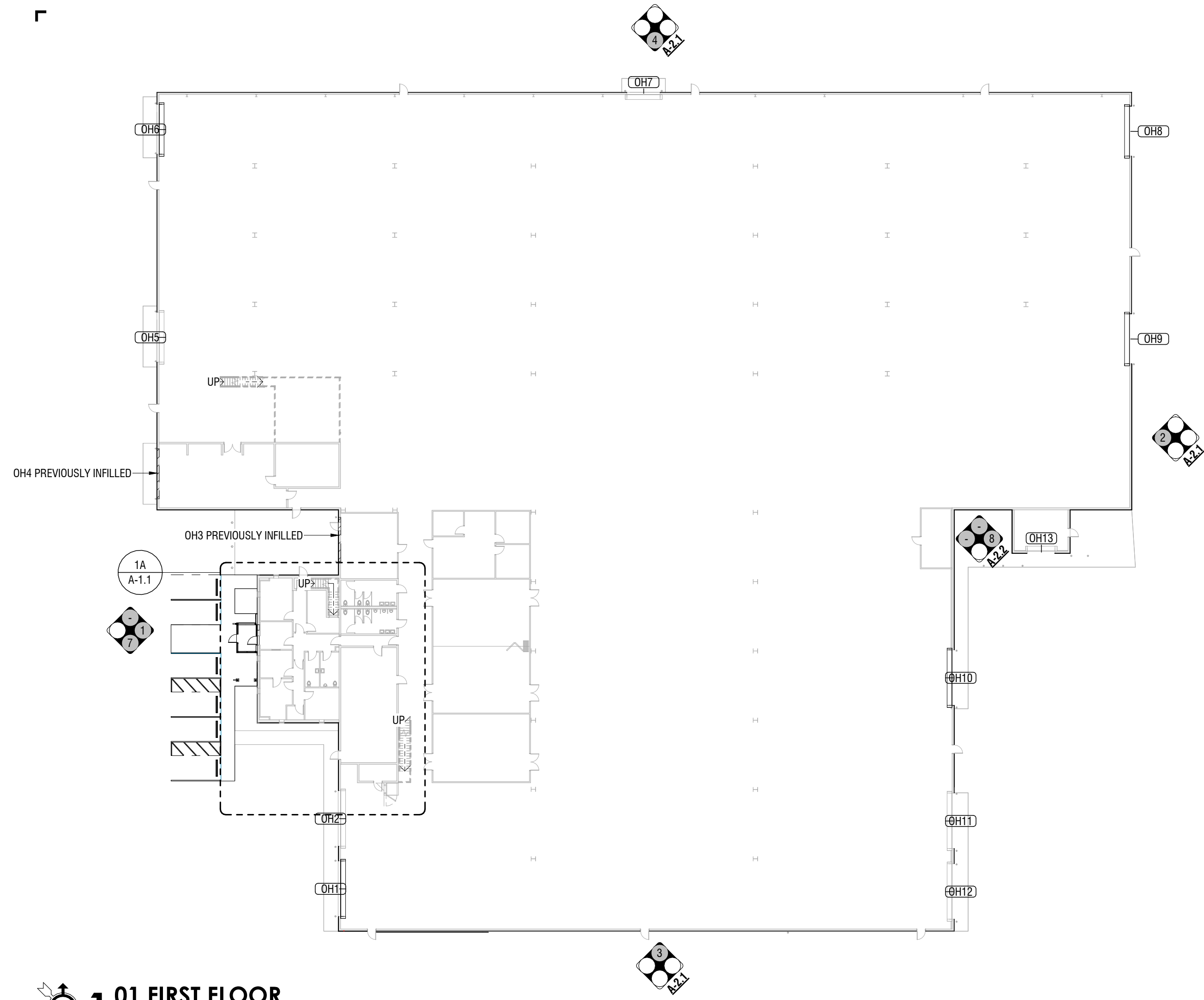
3.3 ADJUSTING AND CLEANING

- A. Remove and replace damaged or deformed characters and signs that do not comply with specified requirements. Replace characters with damaged or deteriorated finishes or components that cannot be successfully repaired by finish touchup or similar minor repair procedures.
- B. Remove temporary protective coverings and strippable films as signs are installed.
- C. On completion of installation, clean exposed surfaces of signs according to manufacturer's written instructions, and touch up minor nicks and abrasions in finish. Maintain signs in a clean condition during construction and protect from damage until acceptance by Owner.

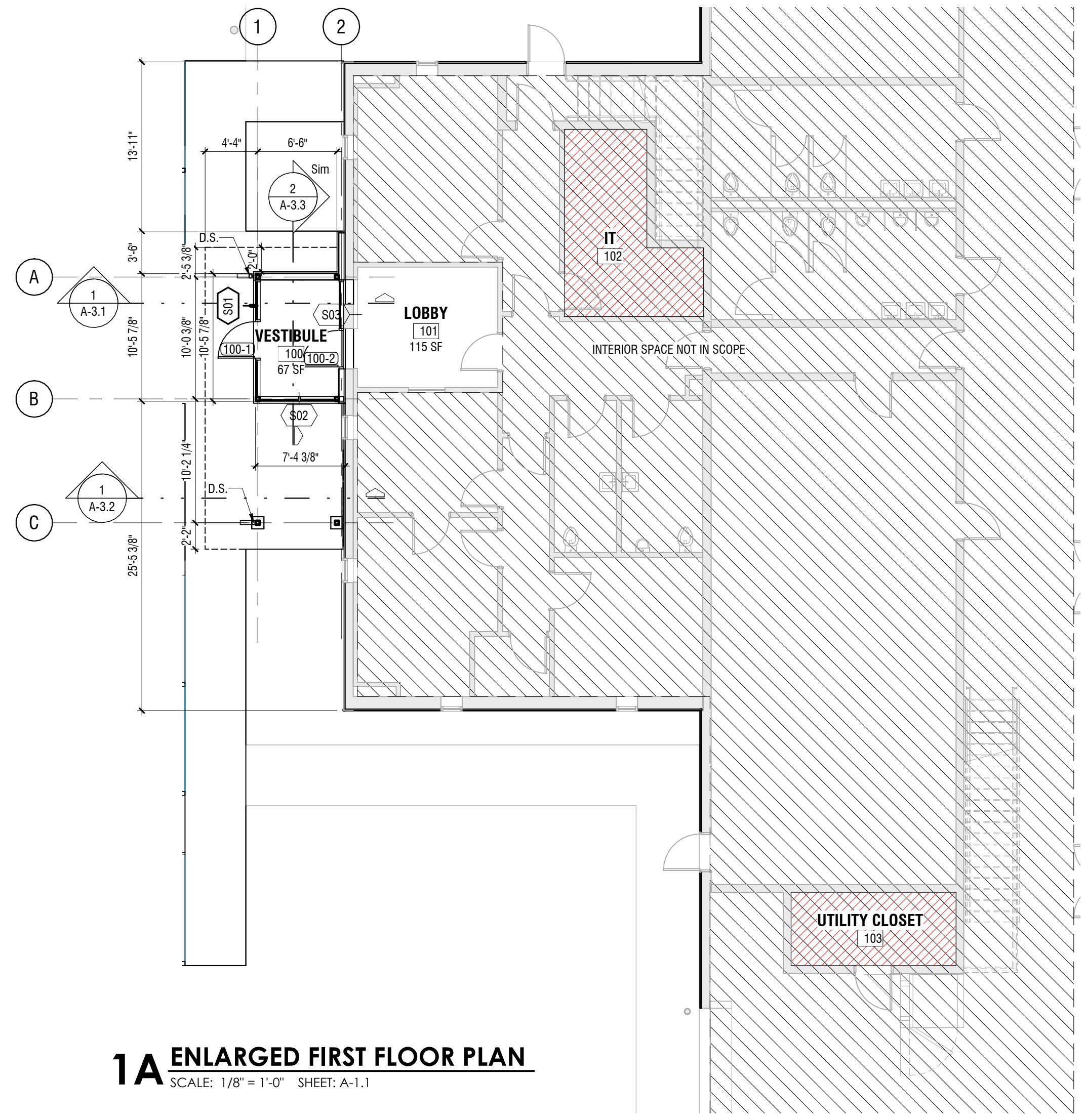
END OF SECTION 101419

New River ATC Renovation Bid Phase PBI Report

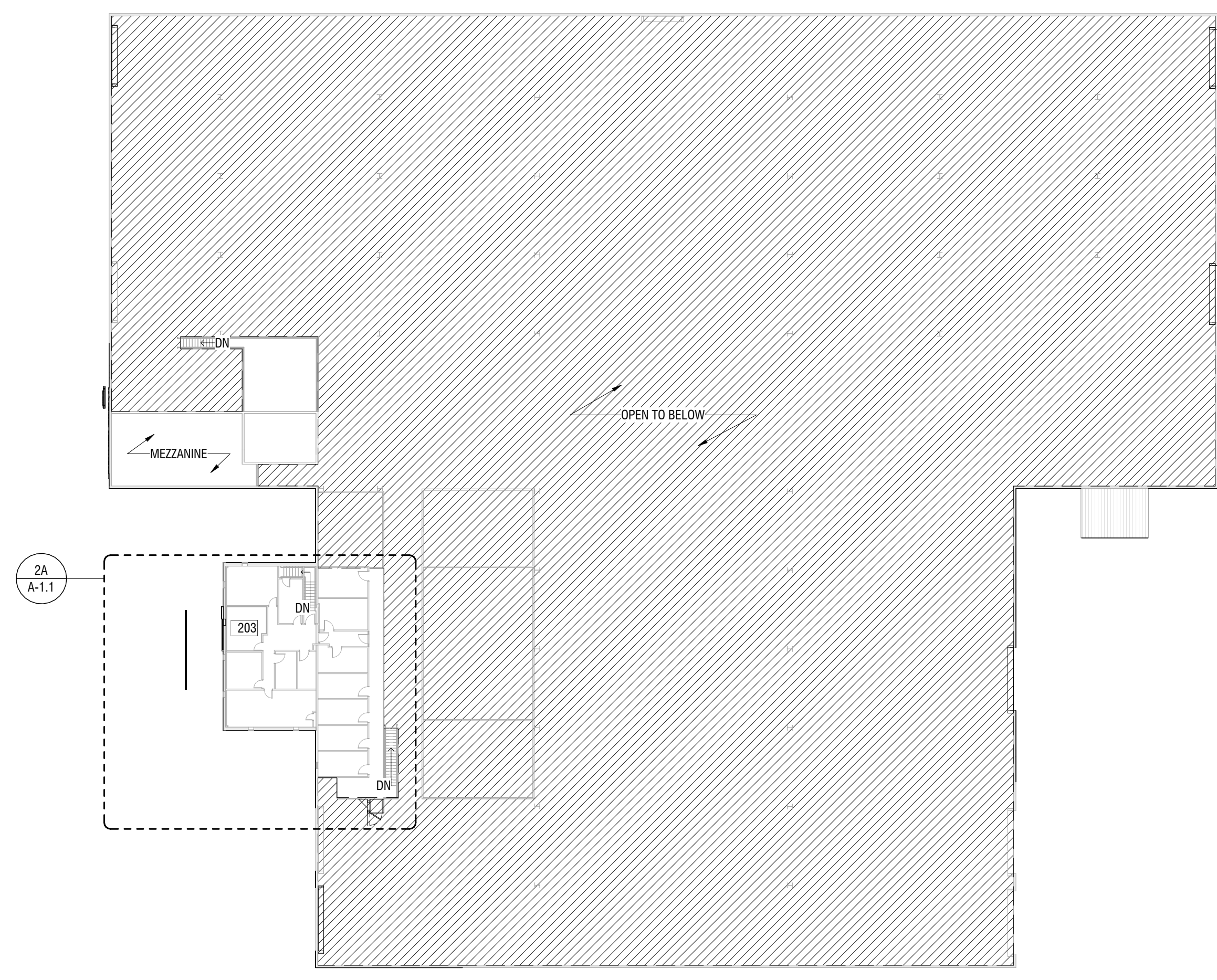
Question	Response	In Addendum
<p>Per drawing page 10/ C-5.2. Heavy-Duty Asphalt calls for 4" of Base I asphalt. Typical Asphalt calls for 3" of Base I asphalt. Per DOH handbook Base I can only be laid at a minimum of 3.25" Can 25mm Superpave be replaced for both applications? The range of 25mm is 3" to 4" minimum to maximum.</p>	<p>Yes, using the 25mm Superpave for the base on both applications will be acceptable.</p>	<p>2</p>
<p>4.What are the requirements for the Alt#2 Monument Sign? Spec section 012300-3.1 references sheets C-3.0 and A-8.1, which neither exist in the drawing set.</p>	<p>Both drawings C-3.0 and A-8.1 are in the Bid Drawings. Please clarify.</p>	<p>3</p>
<p>Could a Floor Plan and Finish Schedule be provided?</p>	<p>Drawings were provided in the Bid Drawings.</p>	<p>3</p>
<p>Where is the closest panel for EWC?</p>	<p>Refer to revised Sheet E-3.1R in Enclosures.</p>	<p>3</p>
<p>What brand of electrical panels are in the building?</p>	<p>GE. Contractor to confirm.</p>	<p>3</p>
<p>Who is the manufacturer of the door access equipment?</p>	<p>BOD is Lenel access control system.</p>	<p>3</p>
<p>Who is the manufacturer of the fire alarm panel?</p>	<p>Honeywell</p>	<p>3</p>
<p>Where is the existing IT room(s) for cameras, fire alarm, and door access?</p>	<p>See attached sheet A-1.1 for location of IT Room and Utility Closet. IT room to host cameras and door access. Utility room to host fire alarm.</p>	<p>3</p>
<p>E03 Cast Aluminum Signage. Please provide specification detail.</p>	<p>See spec 101419 Dimensional Letter Signage in Enclosures.</p>	<p>3</p>
<p>Plan Sheet C3.0 indicates removal of the existing sidewalk at the front of the building and installation of a new sidewalk at the vestibule. Please confirm what is to be installed in the area where the existing sidewalk is removed.</p>	<p>Removed sidewalk depicted shall be replaced with new concrete sidewalk with the exception of the new vestibule area.</p>	<p>3</p>
<p>The typical gravel section on Plan Sheet C5.2 indicates compacted subgrade, 4" of excavated material from existing gravel areas, and 4" of WVDOH Type 1 crushed aggregate base course. Note 1 states that existing gravel areas are to be excavated 8" and replaced per the section detail. Please confirm if the top 4" of WVDOH Type 1 is to be new stone.</p>	<p>Confirmed. 8" of material to be excavated. Lower bottom 4" can be recompacted excavated material; top 4" should be new stone.</p>	<p>3</p>
<p>Due to the petroleum market unstable pricing this year, (which includes asphalt) will there be an allowance for cost escalation of materials?</p>	<p>A price escalation/de-escalation on asphalt material will be acceptable. This cost fluctuation will be reflective of the price difference based on the month of the material purchase/installation as compared to the bid price. This change in price will directly correlate to the of the change in asphalt pricing as depicted on the WVDOH website: https://transportation.wv.gov/highways/contractadmin/Lettings/Pages/FuelandAsphaltPrices.aspx The cost escalation/de-escalation will be applied comparing the costs on the WVDOH website and then have that difference added to, or subtracted from, the contractor's bid price.</p>	<p>3</p>



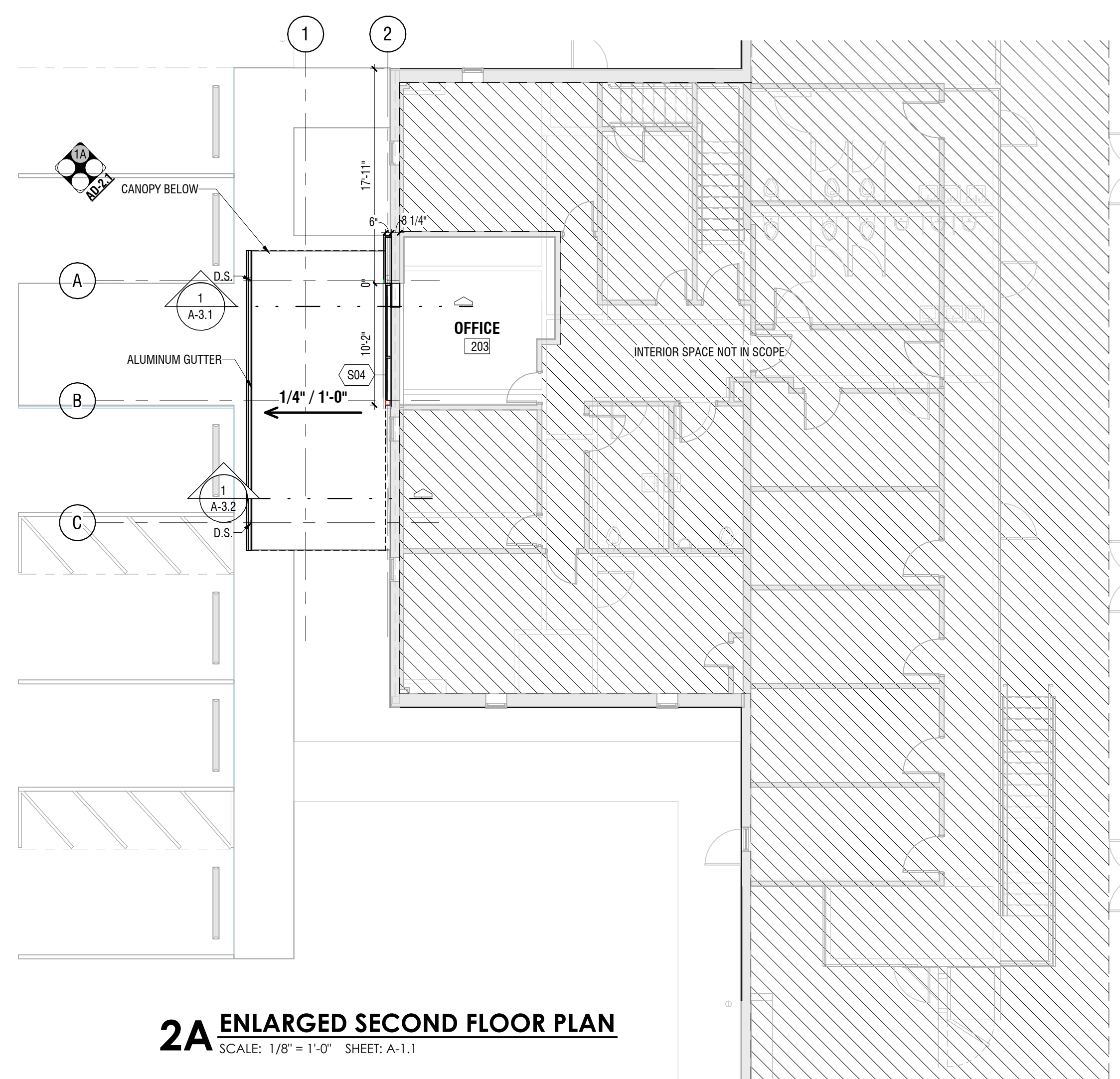
01 FIRST FLOOR
SCALE: 1/32" = 1'-0" SHEET: A-1.1



1A ENLARGED FIRST FLOOR PLAN
SCALE: 1/8" = 1'-0" SHEET: A-1.1



02 SECOND FLOOR
SCALE: 1/32" = 1'-0" SHEET: A-1.1



2A ENLARGED SECOND FLOOR PLAN
SCALE: 1/8" = 1'-0" SHEET: A-1.1

GENERAL PROJECT NOTES

- GENERAL NOTES APPLY TO ALL DRAWINGS**
- A. Do not scale the drawings.
 - B. Verify field conditions prior to commencement of each portion of the work.
 - C. Dimensions for door and window openings are shown nominal. Allow for 1/4-inch (1/4) shimming and sealant of exterior frames.
 - D. All dimensions are actual and are to face of studs, face of concrete walls, face of CMU walls, face of frames, or centerline of columns, unless noted otherwise.
 - E. General contractor shall coordinate all mechanical chase sizes with mechanical subcontractor.
 - F. The perimeter of each floor assembly shall be sealed with mineral wool insulation to prevent the passage of smoke between floors, even if the adjacent floors are of the same occupancy.
 - G. The owner shall be responsible for providing the contractor with rough-in information necessary to accommodate the installation of owner furnished and installed items.
 - H. The contractor shall include all owner furnished and installed items in the construction schedule, and shall coordinate with the owner to accommodate these items.
 - I. General contractor shall coordinate sizes and locations of concrete housekeeping pads with the mechanical and electrical equipment suppliers. Paint all edges of equipment pads safety yellow.
 - J. Safety glazing shall be required in the following locations. See IBC Chapter 24 for exceptions:
 - a. Doors
 - b. Windows (including sidelites and borrow lites) within 24" of any door where the glazing is less than 60" above the walking surface
 - c. Windows, when all of these conditions are met:
 - The exposed glazing is larger than 9sf
 - The bottom edge of glazing is less than 18" above the floor
 - The top edge of the glazing is greater than 36" above the floor
 - One or more walking surfaces are within 36" of the glazing plane
 - d. Glazing in guards and railings, including baluster and infill panels
 - e. Within 60" of a bathtub, hot tub, spa, whirlpool, or swimming pool if the bottom edge of the glazing is less than 60" above the walking or standing surface
 - f. Windows adjacent to stairways or walkways where the glazing is less than 60" above the walking surface
 - g. Fire department access panels (including all panes of a multi-pane insulated glass unit)

BID ITEM No. 2: BUILDING EXTERIOR UPGRADES AND PAINTING

- REPLACEMENT OF METAL PANEL FROM 0'-0" TO 7'-6". SEE ELEVATIONS FOR TYPE AND PROFILE.
- REPLACEMENT OF TRANSLUCENT PANELS ON EAST & WEST FACADES. SEE ELEVATIONS FOR EXACT HEIGHT AND LOCATIONS.
- INSTALL NEW OVERHEAD DOORS. SEE SCHEDULE.
- CLEAN (AS NECESSARY) AND PAINT ALL EXISTING BOLLARDS SAFETY YELLOW.
- PAINT EXTERIOR OF BUILDING IN ITS ENTIRETY.
- PAINT FACADES OF BUILDING AS INDICATED ON PAINT ELEVATIONS.
- CLEAN AND PAINT ALL EXTERIOR SWING DOORS.
- CLEAN AND PAINT OVERHEAD DOORS THAT ARE NOT REPLACED.

BID ITEM No. 3: NEW BUILDING ENTRANCE AND CANOPY

- DEMOLISH EXISTING CANOPY AND ASSOCIATED SUPPORTS.
- CONSTRUCT NEW VESTIBULE AND ENTRANCE CANOPY.
- NEW EXTERIOR ALUMINUM HOLD OFF SIGNAGE ADJACENT TO VESTIBULE.

BID DOCUMENTS
03.09.2026

REVISIONS

ATC RENOVATION
NEW RIVER COMMUNITY & TECHNICAL COLLEGE
527 Odd Rd.
Ghent, WV 25843



A-1.1

Copyright © All rights reserved. Reproduction in whole or in part is prohibited. This drawing is an instrument of service, is the property of the architect and may not be used in any way without written permission of this firm.
Project No: 2024008.001 Drawn by: ---

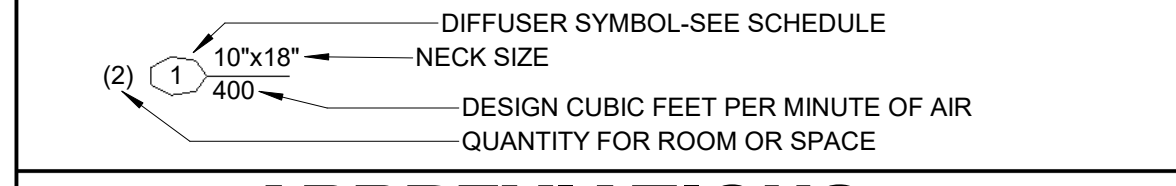
FIRST AND SECOND FLOOR PLAN



BID DOCUMENTS
03.09.2026

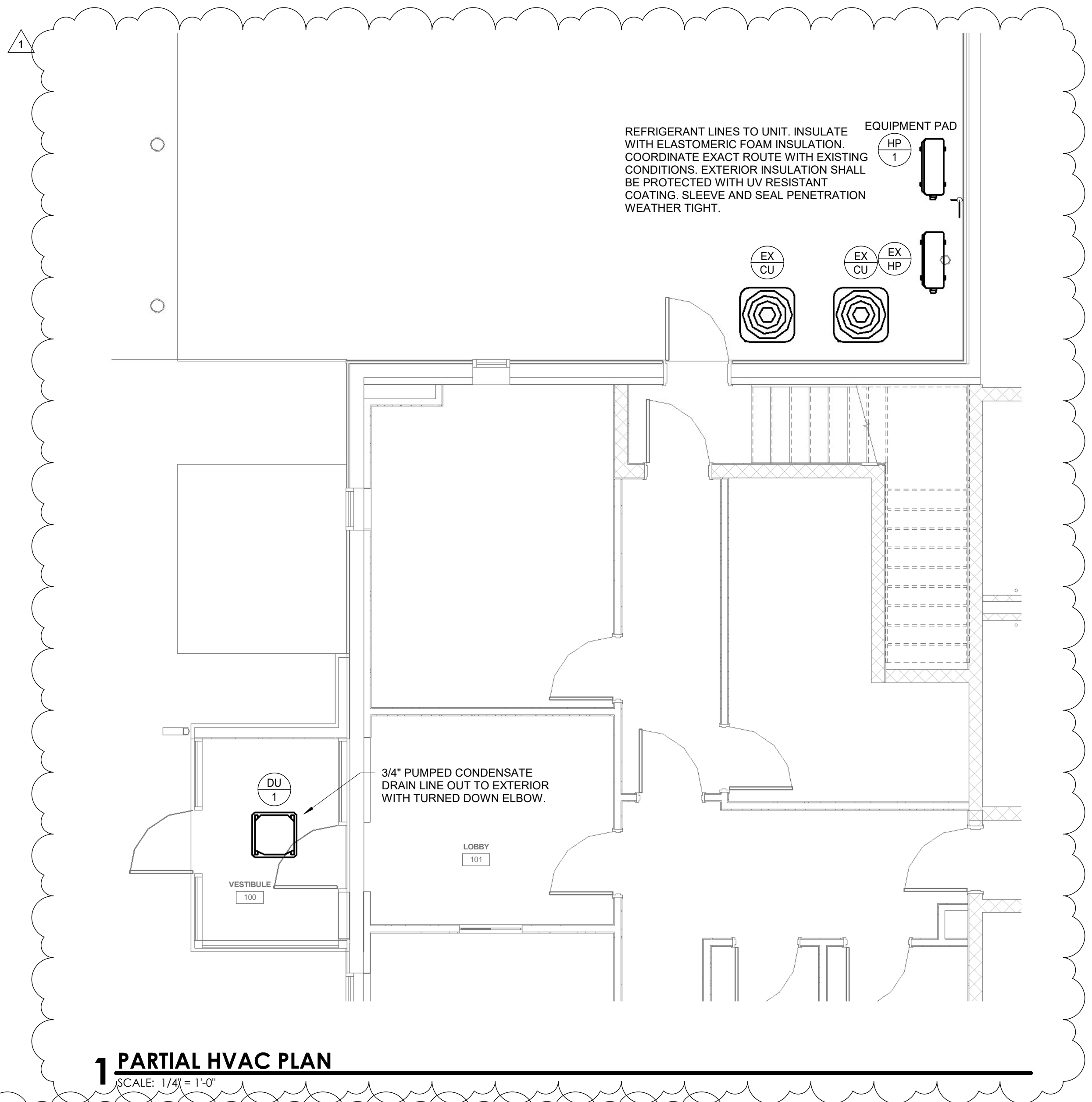
1 4/24/26 Addendum 3

MECHANICAL LEGEND	
SYMBOL	DESCRIPTION
	CIRCUIT SETTER (GPM INDICATED ON PLANS)
	ROUND FLEXIBLE DUCT (ONLY @ DIFFUSER CONNECTION)
	FIRE DAMPER
	MANUAL BALANCING DAMPER
	SUPPLY DUCT RISER
	RETURN OR OUTSIDE AIR DUCT RISER
	EXHAUST AIR DUCT RISER
	DUCT SIZE INSIDE DIMENSIONS - 24"W x 10"D
	DUCT SIZE - 10" DIAMETER
	THERMOSTAT
	HUMIDISTAT
	CONNECT TO EXISTING
	WIRE GUARD
	EXISTING
	DUCT MOUNT SMOKE DETECTOR
	LOOP SUPPLY PIPING
	LOOP RETURN PIPING



ABBREVIATIONS	
AFF	ABOVE FINISHED FLOOR
BFF	BELOW FINISHED FLOOR
BTU	BRITISH THERMAL UNIT
DN	DOWN
GC	GENERAL CONTRACTOR
GPM	GALLON PER MINUTE
NTS	NOT TO SCALE
PC	PLUMBING CONTRACTOR
(TYP)	TYPICAL
VTR	VENT THRU ROOF
W	WITH
WG	WIRE GUARD
WP	WEATHER PROOF

- ### GENERAL MECHANICAL NOTES
- PROVIDE ALL MATERIALS AND EQUIPMENT AND PERFORM ALL LABOR REQUIRED TO INSTALL COMPLETE AND OPERABLE HVAC SYSTEM AS INDICATED ON THE DRAWINGS, AS SPECIFIED AND AS REQUIRED BY CODE.
 - CERTAIN ITEMS SUCH AS RISES AND DROPS IN DUCTWORK, ACCESS DOORS, VOLUME DAMPERS, ETC., ARE INDICATED FOR CLARITY IN CERTAIN AREAS. THIS DOES NOT RELIEVE THE CONTRACTOR OF PROVIDED THESE ITEMS NOT SHOWN IN OTHER AREAS AS REQUIRED FOR A COMPLETE INSTALLATION.
 - REFER TO CLASSROOM CONTROL PANEL DETAIL FOR MOUNTING HEIGHT OF CO2 SENSOR, HUMIDITY SENSOR, AND TEMPERATURE SENSOR.
 - ALL DUCTWORK SHALL CLEAR DOORS AND WINDOWS.
 - ALL DUCTWORK DIMENSIONS, AS SHOWN ON DRAWINGS, ARE INTERNAL CLEAR DIMENSIONS. DUCT SIZE SHALL BE INCREASED IN SIZE TO COMPENSATE FOR INTERNAL LININGS.
 - COORDINATE DIFFUSER, REGISTER, AND GRILLE LOCATIONS WITH ARCHITECTURAL PLANS, LIGHTING, AND OTHER ITEMS LOCATED IN CEILING.
 - LOCATE ALL MECHANICAL EQUIPMENT FOR UNOBSTRUCTED ACCESS TO UNIT ACCESS PANELS, CONTROLS, AND VALVING.
 - PROVIDE FLEXIBLE CONNECTIONS IN ALL DUCTWORK SYSTEMS CONNECTED TO AIR HANDLING UNITS, RTU, EXHAUST FANS, AND OTHER EQUIPMENT THAT REQUIRE VIBRATION ISOLATION. FLEXIBLE CONNECTIONS SHALL BE PROVIDED AT THE POINT OF CONNECTION UNLESS NOTED OTHERWISE.
 - RUNS OF FLEXIBLE DUCTWORK SHALL NOT EXCEED 5 FEET.
 - ALL DUCTWORK SHALL BE COORDINATED WITH OTHER TRADES. OFFSETS AND TRANSITIONS SHALL BE PROVIDED AT NO ADDITIONAL COST TO THE OWNER.
 - PROVIDE ACCESS DOORS IN DUCTWORK WHERE REQUIRED.
 - ALL DUCTS SHALL BE GROUNDED ACROSS FLEXIBLE CONNECTIONS WITH FLEXIBLE COPPER GROUNDING STRAPS.
 - SMOKE DETECTORS SHALL BE FURNISHED AND WIRED BY THE ELECTRICAL CONTRACTOR. THE MECHANICAL CONTRACTOR SHALL BE RESPONSIBLE FOR MOUNTING THE SMOKE DETECTOR IN THE DUCTWORK.
 - CONTROL RELAYS SHALL BE WIRED BY THE ELECTRICAL CONTRACTOR. MECHANICAL CONTRACTOR SHALL BE RESPONSIBLE FOR FURNISHING AND MOUNTING THE RELAY IN THE EQUIPMENT.
 - TURNING VANES SHALL BE INSTALLED IN ALL RECTANGULAR DUCT ELBOWS THAT EXCEED 45° CHANGE IN DIRECTION.
 - INSTALL 1" DUCTLINER IN FIRST 15' OF ALL RETURN AIR DUCTS.

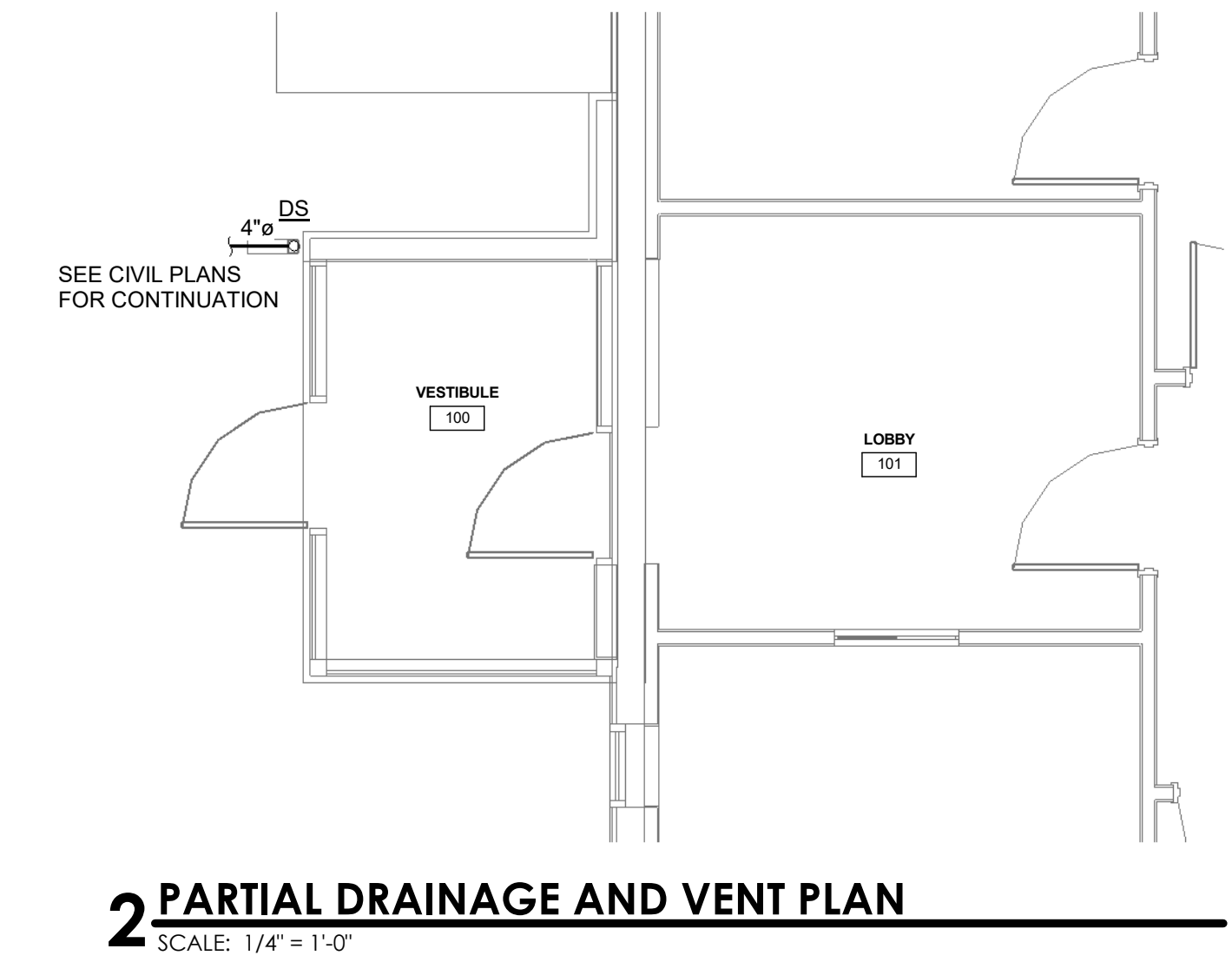
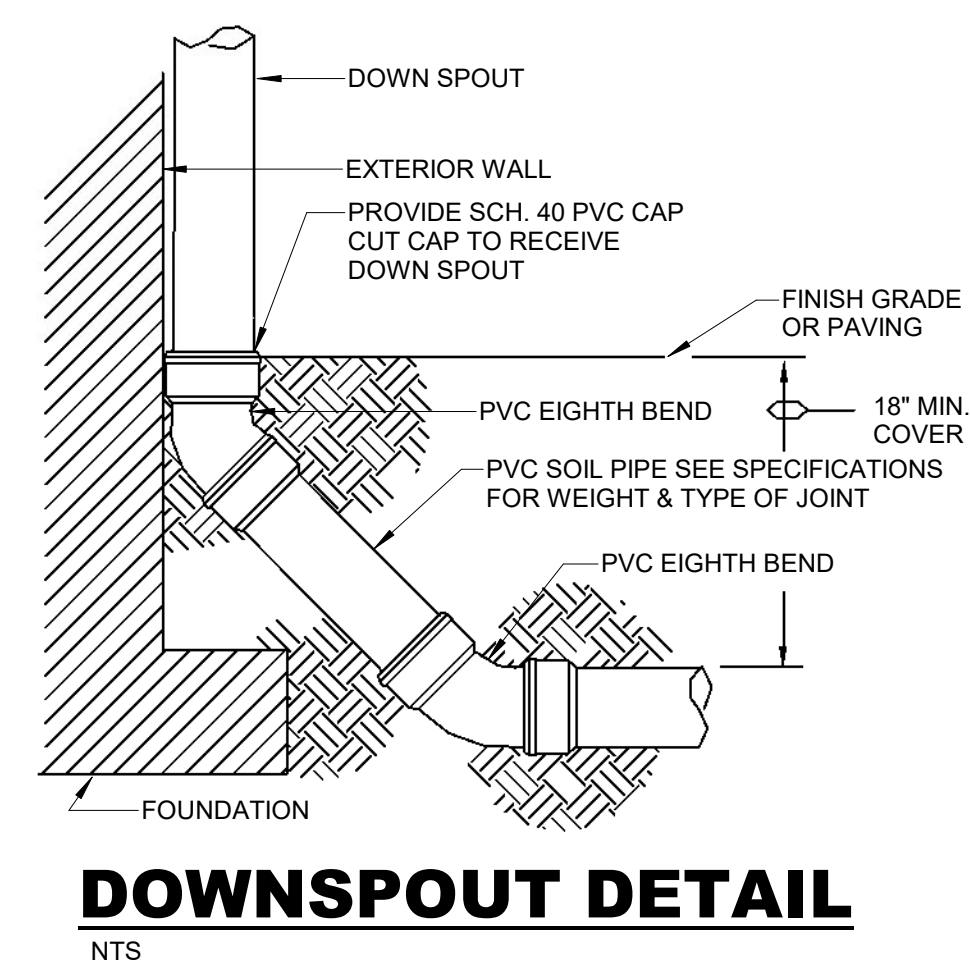


DUCTLESS UNIT AND CONDENSING UNIT SCHEDULE																	
INDOOR UNIT						OUTDOOR UNIT						SYSTEM ELECTRICAL					
MARK	MANUFACTURER	MODEL NO.	WEIGHT (LBS.)	CFM	COOLING MBH	HEATING MBH	MARK	MODEL NO.	TON	WEIGHT (LBS.)	SEER2	VOLTAGE	PHASE	FLA	MCA	MOC	NOTES
DU-1	CARRIER	45MBCAQ12	41	365 CFM	12	12	HP-1	37MAHAQ12	1 TON	100	22.5	208 V	1	12.0 A	15 A	20 A	1, 2

NOTES:
1. HIGH WALL AIR HANDLER SPLIT SYSTEM WITH FILTERS, GRILLE, CONDENSATE PUMP, ELECTRIC HEAT, HARD WIRED WALL MOUNTED THERMOSTAT. 454B REFRIGERANT WITH LEAK DETECTION. LINE SET HIDE AWAY KIT.
2. AIR COOLED CONDENSING UNIT WITH REF LINE, LOW AMBIENT OPERATION, PROGRAMMABLE THERMOSTAT.

PLUMBING SYMBOL LEGEND			
SYMBOL	DESCRIPTION	SYMBOL	DESCRIPTION
	TURN UP OR FROM BELOW		COLD WATER PIPE (CW)
	TURN DOWN		HOT WATER PIPE (HW)
	VENT THRU ROOF		(HW) PIPE @140°F
	BALL VALVE		HOT WATER RECIRCULATING (HWC)
	CHECK VALVE		BELOW GRADE STORM DRAIN
	UNION		SANITARY SEWER
	GAS VALVE		ACID WASTE PIPING
	GAS VALVE IN VERTICAL		ACID VENT PIPING
	SHOCK ABSORBER, LETTER DESIGNATES SIZE		VENT PIPING
	PRESSURE REGULATING VALVE		GAS PIPING
	FLOOR CLEANOUT		WALL HYDRANT
	SURFACE CLEANOUT		ROOF DRAIN
	FLOOR DRAIN		FORCE MAIN PIPING
	FLOOR SINK		FIRE PROTECTION PIPING
	FIXTURE DESIGNATION		CONDENSATE DRAIN PIPING
	ABOVE GRADE RAINWATER CONDUCTOR		DOWNSPOUT NOZZLE
	STRAINER		SECONDARY ROOF DRAIN
			KITCHEN EQUIPMENT NUMBER

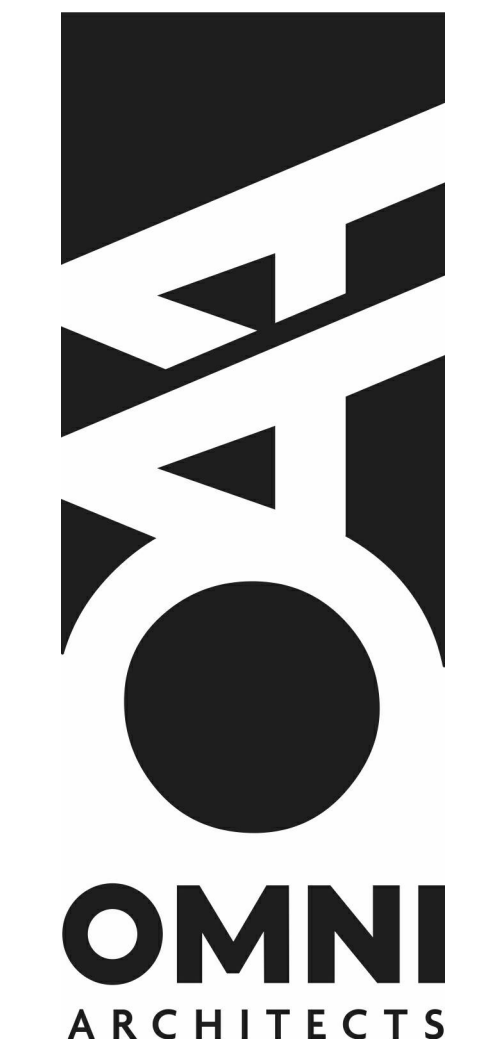
- ### GENERAL PLUMBING NOTES
- ALL WORK SHALL BE IN ACCORDANCE WITH THE CURRENT EDITION OF INTERNATIONAL PLUMBING CODE & LOCAL AUTHORITIES HAVING JURISDICTION.
 - ALL PIPING IN EXTERIOR WALLS TO BE RUN ON BUILDING SIDE OF INSULATION.
 - PIPING LAYOUT IS SCHEMATIC. EXACT LOCATIONS OF PIPES TO BE COORDINATED WITH BUILDING STRUCTURE AND WORK OF OTHER TRADES.
 - MINIMUM PIPE SLOPE ON THE DRAINAGE AND VENT SYSTEM WITHIN THE BUILDING.
A. 2" PIPING SHALL SLOPE AT LEAST 1/4" PER FOOT.
B. ALL PIPE 3" AND LARGER SHALL SLOPE AT LEAST 1/8" PER FOOT.
 - PIPING SHALL NOT BE ROUTED ABOVE ELECTRIC PANELS.
 - COORDINATE PIPING IN TOILET AREAS WITH RECESSED TOILET ACCESSORIES. OFFSET PIPING AS REQUIRED TO ALLOW RECESS OF THESE ITEMS. SEE ENLARGED TOILET PLANS FOR LOCATIONS.
 - NOT ALL PLUMBING FIXTURES, ACCESSORIES AND PIPE SIZES ARE NECESSARILY SHOWN ON THIS DRAWING. REFER TO ALL OTHER SECTIONS, DETAILS, RISERS, PLANS AND SPECIFICATIONS FOR THIS PROJECT FOR COMPLETE SYSTEM REQUIREMENTS.
 - ALL PENETRATIONS THROUGH FIRE/SMOKE RATED CONSTRUCTION WILL BE SEALED WITH A FIRE RATED CAULK EQUAL TO OR EXCEEDING THE CONSTRUCTION FIRE RATING.
 - COORDINATE FINAL LOCATION OF PLUMBING FIXTURES, PIPING, ACCESSORIES, ETC. WITH GENERAL CONTRACTOR BEFORE FABRICATION OR INSTALLATION.
 - COORDINATE ALL PENETRATIONS OF FLOORS, ROOF, WALLS, ETC. WITH GENERAL CONTRACTOR.



ATC RENOVATION

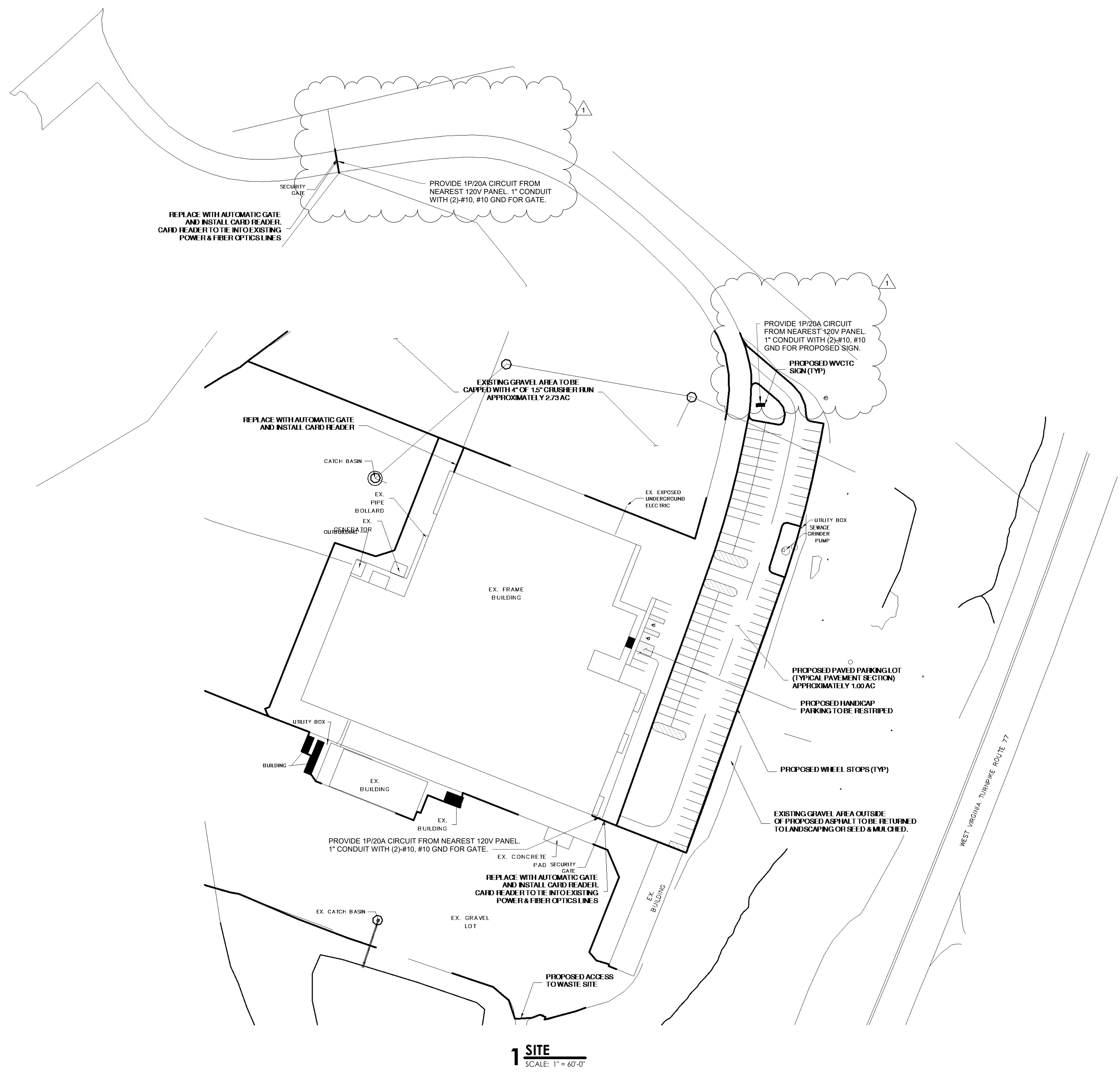
NEW RIVER COMMUNITY & TECHNICAL COLLEGE
527 Odd Rd.
Chent, WV 25843

HVAC AND PLUMBING PLANS



MP-1.1r

Copyright © All rights reserved. Reproduction in whole or in part is prohibited. This drawing is an instrument of service, is the property of the Architect and may not be used in any way without written permission of this firm.
Project No. 2024008.001 Drawn by: Staff



1 SITE
SCALE: 1" = 60'-0"

ATC RENOVATION
NEW RIVER COMMUNITY & TECHNICAL COLLEGE
527 Odd Rd.
Ghent, WV 25843

SITE PLAN



OMNI
ARCHITECTS

E-2.1r

Copyright © All rights reserved. Reproduction in whole or in part is prohibited. This drawing is an instrument of service, is the property of the Architect and may not be used in any way without written permission of this firm.
Project No. 2024008.001 Drawn by: Author



BID DOCUMENTS
03.09.2022

1 4/24/25 Addendum 3

ATC RENOVATION
NEW RIVER COMMUNITY & TECHNICAL COLLEGE
527 Odd Rd.
Ghent, WV 25843



Copyright © All rights reserved. Reproduction in whole or in part is prohibited. This drawing is an instrument of service, is the property of the Architect and may not be used in any way without written permission of this firm.
Project No. 2024008.001 Drawn by: Staff

WIRE AND CONDUIT SIZE SCHEDULE					
MOC (AMP)	CONDUCTOR SIZE	GROUND SIZE	CONDUIT SIZE WITH GROUND		
			1-POLE	2-POLE	3-POLE
20	#12	#12	3/4"	3/4"	3/4"
30	#10	#10	3/4"	3/4"	3/4"
40	#8	#10	3/4"	3/4"	3/4"
50	#8	#10	3/4"	3/4"	3/4"
60	#6	#8	3/4"	3/4"	3/4"
70	#4	#8	1"	1"	1"
80	#4	#8	-	1"	1"
90	#3	#8	-	1 1/4"	1 1/4"
100	#2	#8	-	1 1/4"	1 1/4"
110	#2	#6	-	1 1/4"	1 1/4"
125	#1	#6	-	1 1/4"	1 1/4"
150	#1/0	#6	-	1 1/2"	1 1/2"
175	#2/0	#6	-	1 1/2"	2"
200	#3/0	#6	-	1 1/2"	2"
225	#4/0	#4	-	-	2-1/2"
250	250MCM	#3	-	-	2 1/2"
300	350MCM	#3	-	-	3"
350	500MCM	#3	-	-	4"
400	500MCM	#3	-	-	4"

INCREASE CONDUCTOR SIZE AS REQUIRED FOR MAXIMUM VOLTAGE DROP OF 2% FOR FEEDERS AND 3% FOR BRANCH CIRCUITS.
ALL CIRCUITS SHALL COMPLY WITH NEC AND OTHER APPLICABLE CODES.
CONDUCTOR SIZE BASED ON 75 DEGREE C LUGS.

GENERAL ELECTRICAL NOTES

- COORDINATE LOCATIONS OF CEILING-MOUNTED LIGHTING FIXTURES, SPEAKERS AND OTHER ITEMS WITH THE CEILING PATTERN AND MECHANICAL EQUIPMENT.
- CENTER WALL-MOUNTED LIGHTING FIXTURES DIRECTLY OVER ANY RELATED LAVATORY, MIRROR OR OTHER EQUIPMENT.
- LOCATE FLOOR SERVICE FITTINGS, FLOOR BOXES AND FLOOR CONDUIT TERMINATIONS APPROXIMATELY AS INDICATED, EXACTLY AS NECESSARY OR AS DIRECTED TO COORDINATE WITH THE ASSOCIATED FURNISHINGS OR EQUIPMENT.
- LOCATE DUPLEX RECEPTACLES DESIGNATED "EWC" TO BE CONCEALED BY THE ASSOCIATED WATER COOLER.
- LOCATE SNAP SWITCHES APPROXIMATELY 4 TO 6 INCHES FROM THE LATCH SIDE OF THE RELATED DOOR FRAME WHERE POSSIBLE, EXCEPT AS NOTED OTHERWISE.
- LOCATE SNAP SWITCHES DIRECTLY UNDER THERMOSTATS WHERE THEY ARE SHOWN IN CLOSE PROXIMITY (SEE MECHANICAL DRAWINGS).
- LOCATE WALL BOXES APPROXIMATELY AS INDICATED, EXACTLY AS DIRECTED OR AS NECESSARY TO ACHIEVE SYMMETRY AND COORDINATED WITH THE BUILDING FINISHES AND EQUIPMENT.
- LOCATE ALL BOXES TO BE ACCESSIBLE MOUNT FLUSH BOXES WITH THEIR FRONT EDGES EVEN WITH THE FINISHED SURFACE OF COMBUSTIBLE MATERIALS, WITHIN 1/4 INCH OF NON-COMBUSTIBLE MATERIALS.
- MOUNT SINGLE-GANG BOXES WITH THE LONGER DIMENSION VERTICAL EXCEPT AS NOTED OTHERWISE. MOUNT ALL BOXES AND PLATES PLUMB.
- DO NOT INSTALL BOXES BACK TO BACK ON BOTH SIDES OF A PARTITION. OFFSET BOXES A MINIMUM OF 6 INCHES EXCEPT AS NOTED OTHERWISE.
- LOCATE ALL RACEWAYS TO AVOID INTERFERENCE WITH DUCTS, PIPES, MECHANICAL EQUIPMENT, WITH THE REMOVAL OF CEILING TILE, OR WITH ACCESS TO EQUIPMENT THAT REQUIRES PERIODIC ADJUSTMENT OR MAINTENANCE.
- DO NOT SUPPORT RACEWAYS OR EQUIPMENT FROM PIPES, DUCTS, OR A CEILING SUSPENSION SYSTEM.
- BRANCH CIRCUIT AND FEEDERS ARE DESIGNATED BY A NUMBER AND LETTER.
- INSTALL FEEDER RACEWAYS WITH NO MORE THAN 3 CURRENT-CARRYING CONDUCTORS PLUS A NEUTRAL CONDUCTOR, PLUS A GROUND CONDUCTOR.
- INDICATED BRANCH CIRCUIT CONDUCTOR SIZES ARE BASED ON NO MORE THAN 3 CURRENT-CARRYING CONDUCTORS AND A NON-CURRENT-CARRYING NEUTRAL CONDUCTOR IN EACH RACEWAY. WHERE THE NUMBER OF CONDUCTORS EXCEEDS THIS AMOUNT, ADJUST THE CONDUCTOR SIZES IF AND AS NECESSARY TO ACCOUNT FOR DERATING THEIR AMPACITY IN ACCORDANCE WITH THE NATIONAL ELECTRIC CODE.
- FROM EACH FLUSH MOUNTED PANELBOARD EXTEND A MINIMUM OF THREE EMPTY 3/4" CONDUITS TO ABOVE AN ACCESSIBLE CEILING AND CAP.
- PROVIDE AN ADJACENT DISCONNECT SWITCH FOR EACH ELECTRIC UNIT HEATER.
- IN MECHANICAL ROOMS ADJUST LIGHTING FIXTURE LOCATIONS AS NECESSARY TO COORDINATE WITH EQUIPMENT AND TO PROVIDE OPTIMUM ILLUMINATION.
- LOCATE TV AND DATA OUTLETS APPROXIMATELY AS SHOWN ON DRAWINGS. COORDINATE EXACT LOCATIONS WITH ARCHITECT.
- WHERE EMERGENCY LIGHTING FIXTURES ARE CONTROLLED BY ONE OR MORE WALL SWITCHES, PROVIDE AN UNSWITCHED CIRCUIT CONDUCTOR FOR OPERATION OF THE EMERGENCY CONTROLS.
- PROVIDE A SEPARATE NEUTRAL CONDUCTOR FOR EACH DIMMED LIGHTING CIRCUIT.
- COORDINATE OUTLET LOCATIONS AND CIRCUIT RATINGS WITH THE EQUIPMENT SHOWN ON THE MECHANICAL AND PLUMBING DRAWINGS AND WITH ALL EQUIPMENT AND FURNISHINGS SHOWN ON THE ARCHITECTURAL DRAWINGS.
- EQUIPMENT SHALL BE GROUNDED IN ACCORDANCE WITH SPECIFICATIONS AND AS REQUIRED BY THE NATIONAL ELECTRIC CODE.
- ALL WORK SHALL COMPLY WITH NFPA 70.
- ELECTRICAL BRANCH CIRCUITS SHALL NOT SHARE A COMMON NEUTRAL.

ELECTRICAL SYMBOL LEGEND

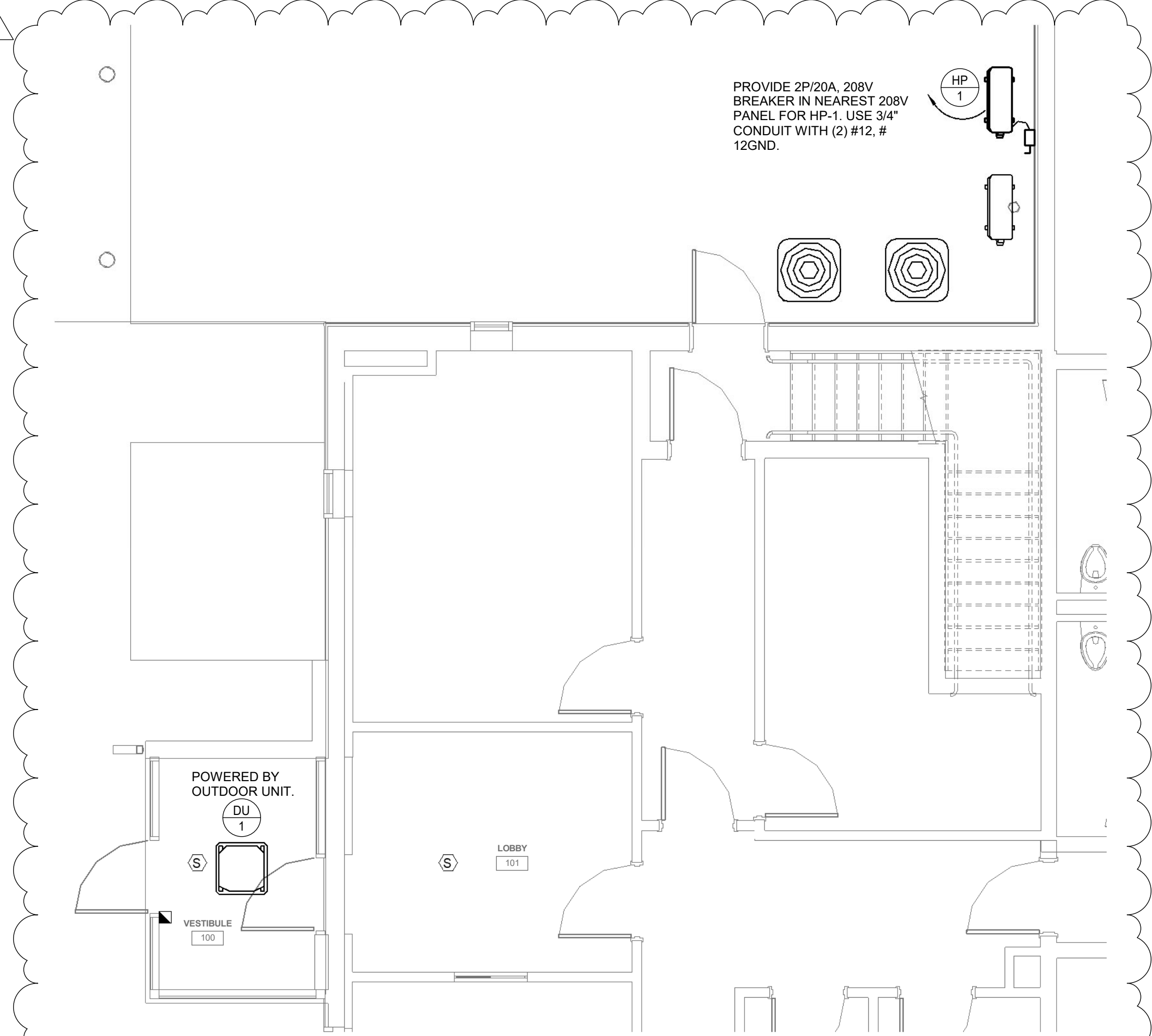
SYMBOL	DESCRIPTION	MT HEIGHT UNO
(A)	PLAN NOTE	
—	WIRING IN CONDUIT CONCEALED IN CEILING, OR IN WALL. CONDUIT AND WIRE AS REQUIRED BY CODE UNLESS OTHERWISE NOTED.	
—	CONDUIT STUBBED OUT	
HA-1	BRANCH CIRCUIT, "HA" DESIGNATES PANEL "1" DESIGNATES CIRCUIT NUMBER	
[JB]	JUNCTION BOX	
[]	RECESSED LED LIGHT FIXTURE	
[]	EMERGENCY LIGHT FIXTURE	
[]	WALL MOUNTED LIGHT FIXTURE	
[]	EXIT SIGN WALL MOUNTED WITH REMOTE HEAD.	
S	SINGLE POLE TOGGLE SWITCH.	48" AFF
[]	DIRECT CONNECTION	
[]	CLOSED CIRCUIT TELEVISION CAMERA	
[]	PANELBOARD. SEE PANEL SCHEDULES ON DRAWINGS FOR RATING AND SIZE	
[]	SMOKE DETECTOR.	
[]	FIRE ALARM MANUAL PULL STATION	48" AFF
[]	CARD READER	48" AFF

FIRE ALARM SYSTEM NOTES

- ALL EXTERIOR DOORS SHALL HAVE A PULL STATION MOUNTED ADJACENT TO THE DOOR. SPACING OF PULL STATIONS SHALL NOT EXCEED 200' ALONG PATH OF EGRESS.
- FIELD VERIFY LOCATION AND QUANTITY OF AIR HANDLING UNITS GREATER THAN 2000 CFM. PROVIDE A DUCT SMOKE DETECTOR IN THE RETURN AIR DUCT OF EACH UNIT. EACH AIR HANDLER DUCT SMOKE DETECTOR SHALL BE SEPARATELY ANNUNCIATED BY THE FIRE ALARM PANEL AND THE ANNUNCIATOR. PROVIDE REMOTE LED INDICATOR AT CEILING BELOW EACH DETECTOR.
- FIELD VERIFY LOCATION AND QUANTITY OF ELECTRICAL PANELS. PROVIDE A SMOKE DETECTOR IN EACH OF THESE ROOMS.
- PROVIDE SMOKE DETECTORS IN CORRIDOR A MAXIMUM 15' FROM EACH END AND A MAXIMUM OF 30' ON CENTER.
- PROVIDE RATE OF RISE HEAT DETECTORS IN ALL TOILETS.
- PROVIDE STROBES IN ALL TOILETS.
- PROVIDE RATE OF RISE HEAT DETECTORS IN ALL UTILITY ROOMS, STORAGE ROOMS, JANITOR CLOSETS, AND LOCKER ROOMS. SPACING SHALL BE PER NFPA 72.
- PROVIDE FIXED TEMPERATURE HEAT DETECTORS IN ATTICS, COCKLOFTS, FURNACE ROOMS, AND KITCHENS. SPACING SHALL BE PER NFPA 72.
- PROVIDE HORN/STROBES AS REQUIRED BY NFPA 72. SPACING AND SOUND LEVEL SHALL BE SUCH THAT THE AUDIBLE ALARM CAN BE EFFECTIVELY HEARD ABOVE THE AMBIENT NOISE LEVEL OBTAINED UNDER NORMAL OCCUPIED CONDITIONS.
- PROVIDE STROBES IN ALL OCCUPIED SPACES EXCEPT COMMON AREAS AS DEFINED IN THE AMERICAN WITH DISABILITIES ACT. SPACING SHALL BE PER NFPA 72.

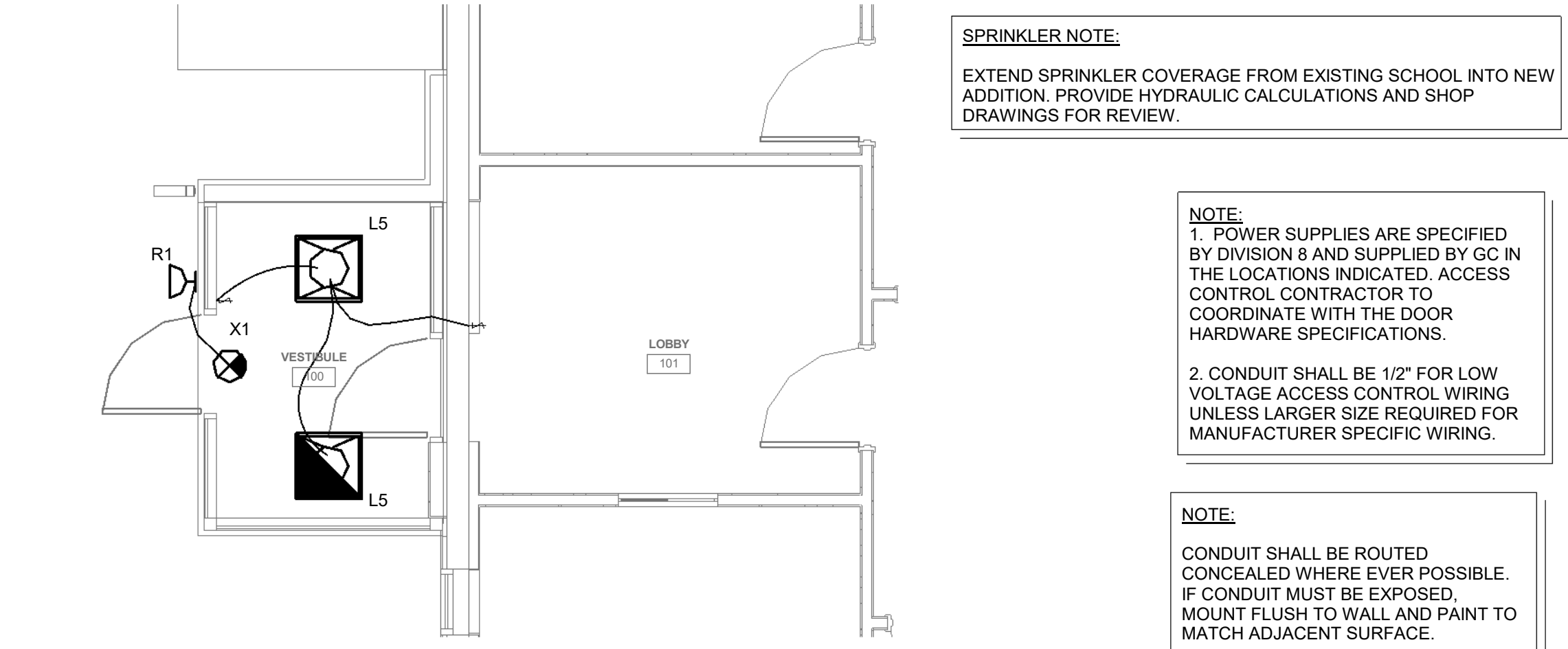
GENERAL FIRE ALARM NOTES

- PROVIDE ALL MATERIAL AND EQUIPMENT AND PERFORM ALL LABOR REQUIRED TO INSTALL A COMPLETE AND OPERABLE FIRE ALARM SYSTEM DEVICES AS INDICATED ON THE DRAWINGS ARE SCHEMATIC IN NATURE. CONTRACTOR SHALL PROVIDE ANY ADDITIONAL WORK AS REQUIRED BY LOCAL AHJ AT NO ADDITIONAL COST TO THE OWNER.
- IT SHALL BE THE CONTRACTORS SOLE RESPONSIBILITY TO PROVIDE A FIRE ALARM SYSTEM IN FULL COMPLIANCE WITH THE LATEST EDITION OF (NFPA 72, WV STATE FIRE CODE, AND ADA).
- THIS BUILDING WILL BE PARTIALLY SPRINKLED PER NFPA 13.
- SUPPLY A 120 VOLT CONNECTION AS REQUIRED AT ALL SYSTEMS EQUIPMENT.
- DEVICES SHOWN ARE APPROXIMATE LOCATIONS. FIELD VERIFY ACTUAL CONDITIONS.
- DO NOT SUPPORT RACEWAYS FROM PIPES DUCTS OR CEILING SUSPENSION SYSTEM.
- EXPOSED RACEWAY AND BLANK COVERS SHALL BE PAINTED TO MATCH EXISTING SURFACES.
- SURFACES DAMAGED BY THIS CONTRACTOR SHALL BE REPAIRED.
- WHERE SURFACES ARE REQUIRED TO BE PATCHED OR REPAIRED, SURFACE SHALL BE PAINTED TO MATCH ADJACENT SURFACE.
- ALL JUNCTION BOX COVERS IN FIRE ALARM RACEWAY SHALL BE PAINTED RED.
- MOUNTING HEIGHT OF FIRE ALARM STROBE SHALL BE 80" AFF.
- SYSTEM SHALL INTERFACE WITH HOOD SUPPRESSION SYSTEM PER NFPA.
- SYSTEM SHALL INTERFACE WITH SHUNT TRIP BREAKERS OR GAS VALVE FOR ALL EQUIPMENT LOCATED UNDER THE KITCHEN HOOD.



1 PARTIAL POWER PLAN

SCALE: 1/4" = 1'-0"

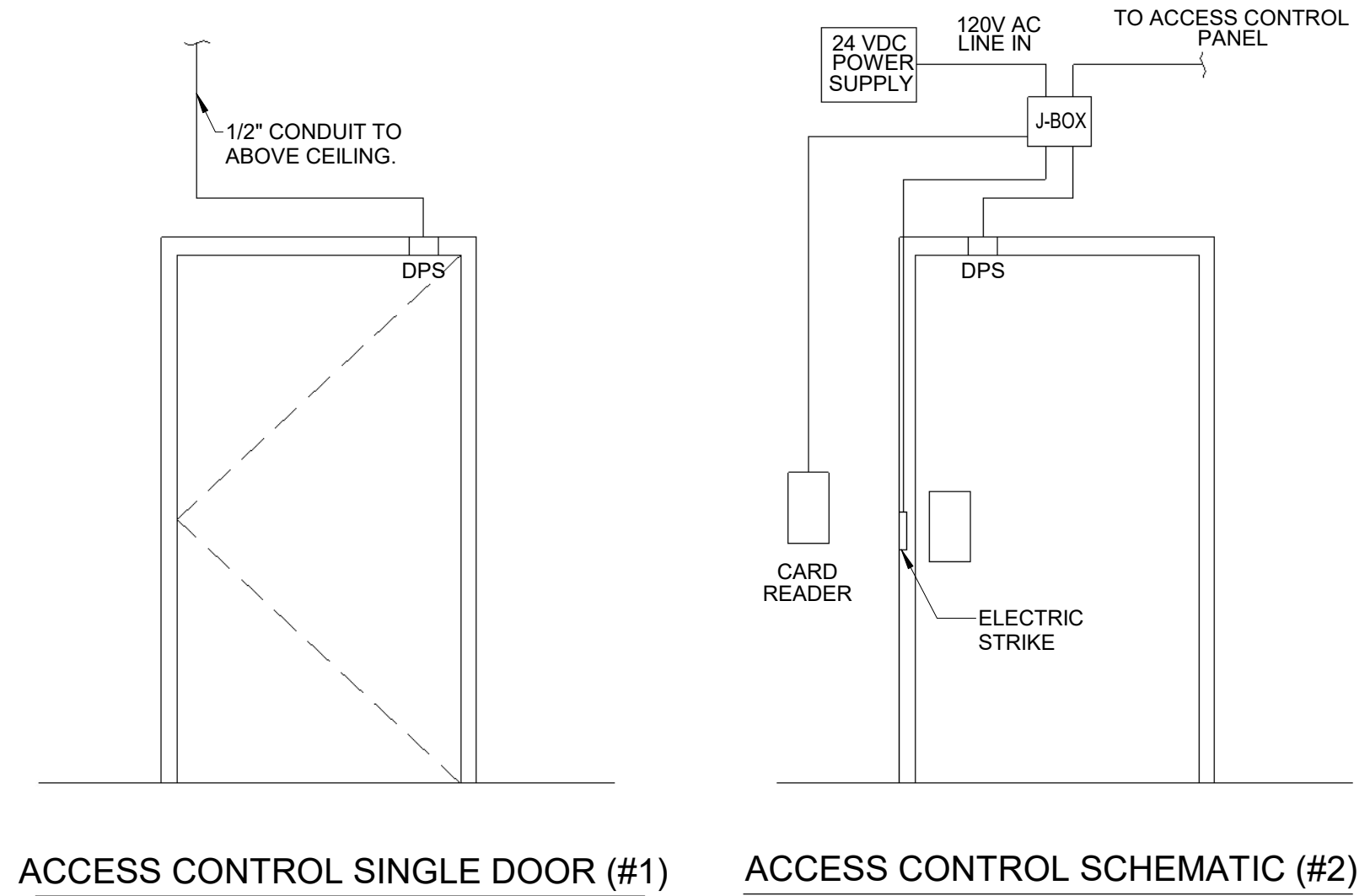


2 PARTIAL LIGHTING PLAN

SCALE: 1/4" = 1'-0"

LIGHTING FIXTURE SCHEDULE						
MARK	LAMP	MOUNTING	MANUFACTURER	MODEL	DESCRIPTION	NOTES
L5	LED	RECESSED	LITHONIA COOPER COLUMBIA	2X2CLXAL07	2X2 FLAT PANEL LED WHITE FRAME, SATIN WHITE LENS ELECTRONIC DRIVER	120V
R1	LED	Surface	LITHONIA COOPER COLUMBIA	ELA NX	EMERGENCY EGRESS WALL LIGHT	6V
X1	LED	UNIV	LITHONIA COOPER DAY-BRITE	LHQM	EXIT SIGN WHITE BODY RED LETTERS BATTERY REMOTE CAPABLE	120V

- NOTES:**
- VERIFY CEILING CONSTRUCTION TYPE WITH ARCHITECTURAL DRAWINGS TO DETERMINE WHETHER RECESSED LIGHTING FIXTURES SHALL BE FLANGE OR GRID TYPE MOUNTING.
 - DIRECTIONAL INDICATOR ON EXIT SIGNS SHALL COMPLY WITH NFPA 101 SECTION 5-10.4.1.2.
 - VERIFY VOLTAGE TO OPERATE FIXTURE WITH ELECTRICAL DRAWINGS.
 - LIGHT FIXTURES SHALL COME COMPLETE WITH NECESSARY MOUNTING HARDWARE.
 - ALL RECESSED FLUORESCENT LIGHT FIXTURES SHALL BE PAINTED AFTER FABRICATION.
 - ANY REQUEST FOR SUBSTITUTION TO THE LIGHTING FIXTURE SCHEDULE SHALL BE OF EQUAL OR HIGHER QUALITY AS DETERMINED BY THE ENGINEER. ANY PERSON REQUESTING TO SUBSTITUTE FIXTURES MUST SUBMIT IN BOUND FORM A COLLECTION OF THE MANUFACTURER'S CUT SHEETS TO BE REVIEWED BY THE ENGINEER A MINIMUM OF (TWENTY-ONE) 21 DAYS PRIOR TO BID. ACCEPTED SUBSTITUTIONS SHALL BE REFLECTED IN AN ADDENDUM.
 - SUPPLY HANGING BAR KITS WITH ALL RECESSED DOWN LIGHTS.
 - ALL OPEN RATED METAL HALIDE LIGHT FIXTURES TO HAVE OPEN RATED LAMPS AND SOCKETS.
 - EMERGENCY BATTERY PACK FOR FLUORESCENT LIGHT FIXTURES SHALL BE RATED TO SUPPLY A MINIMUM OF 900 INITIAL LUMENS.
 - WHERE LIGHT FIXTURES ARE SHOWN CONTROLLED BY TWO SWITCHES, FOR TWO LEVEL CONTROL, CONNECT THE OUTSIDE LAMPS TO ONE SWITCH AND THE INSIDE LAMP(S) TO THE OTHER SWITCH. PROVIDE FIXTURE WITH BALLASTS AS NECESSARY.



ACCESS CONTROL SINGLE DOOR (#1)

ACCESS CONTROL SCHEMATIC (#2)