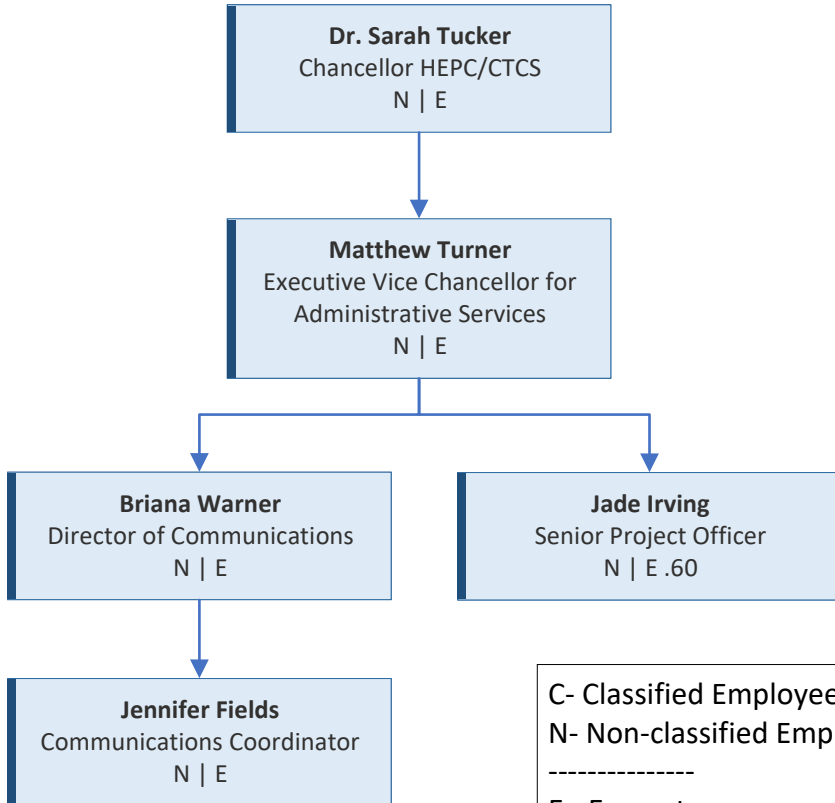


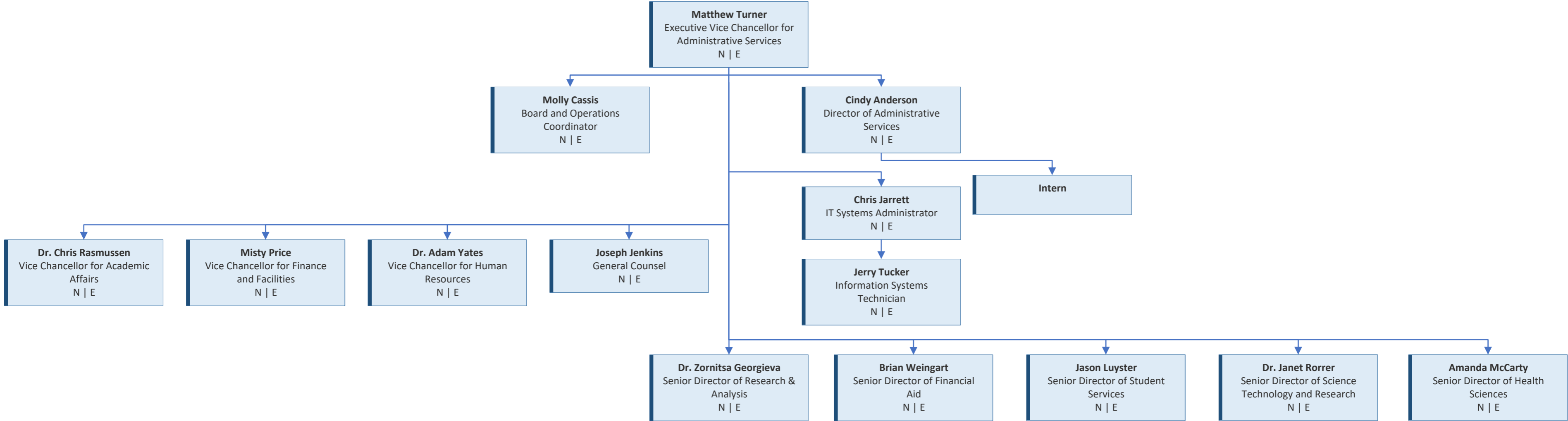
# West Virginia Higher Education Policy Commission

## Chancellor's Office



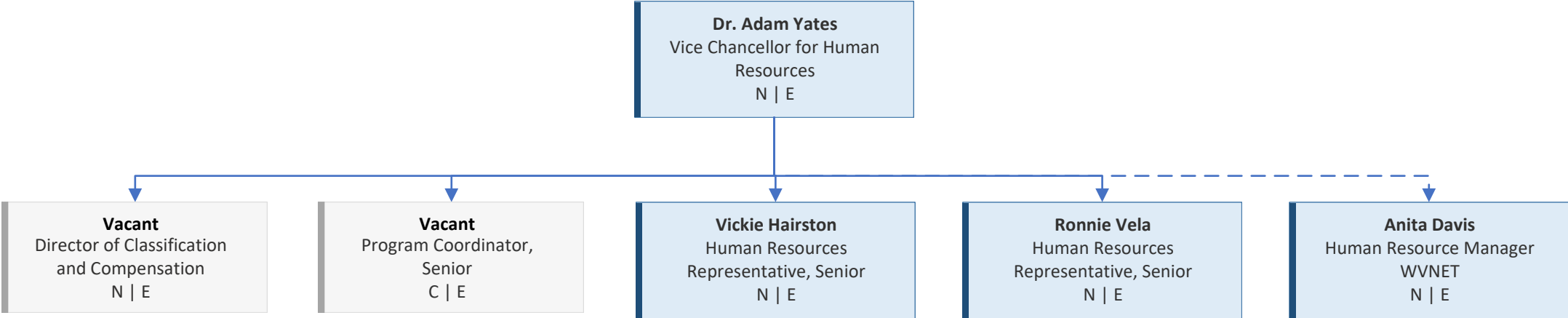
C- Classified Employees  
N- Non-classified Employees  
-----  
E - Exempt  
NE - Non-exempt

# Administrative Services Division



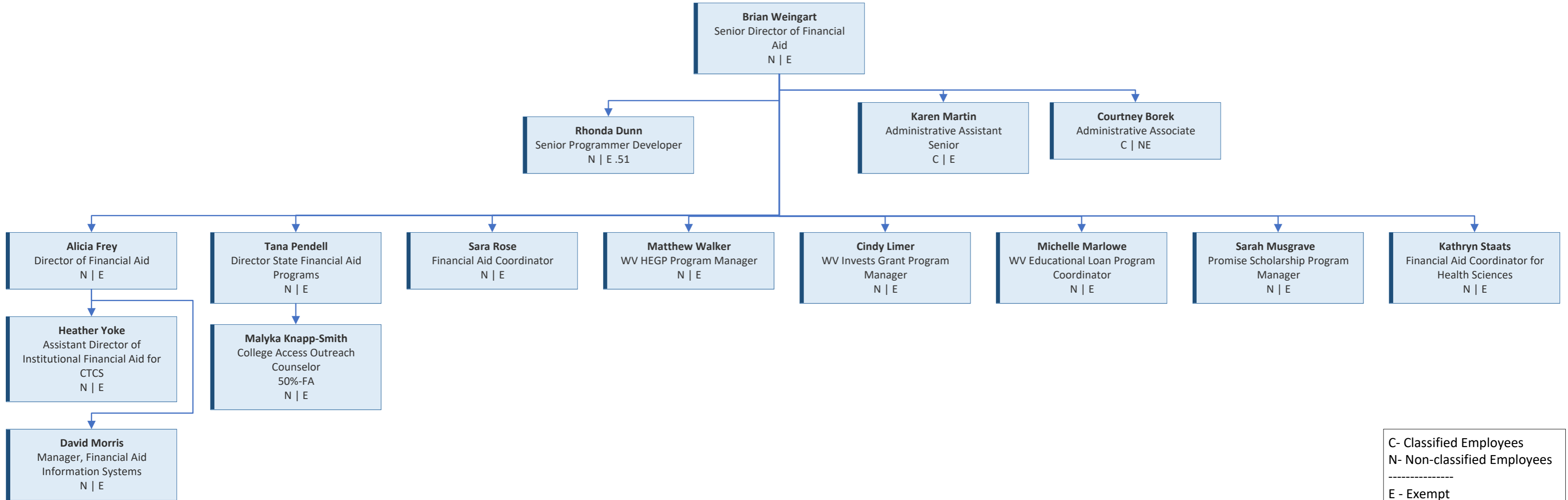
C- Classified Employees  
 N- Non-classified Employees  
 -----  
 E - Exempt  
 NE - Non-exempt

# Division of Human Resources



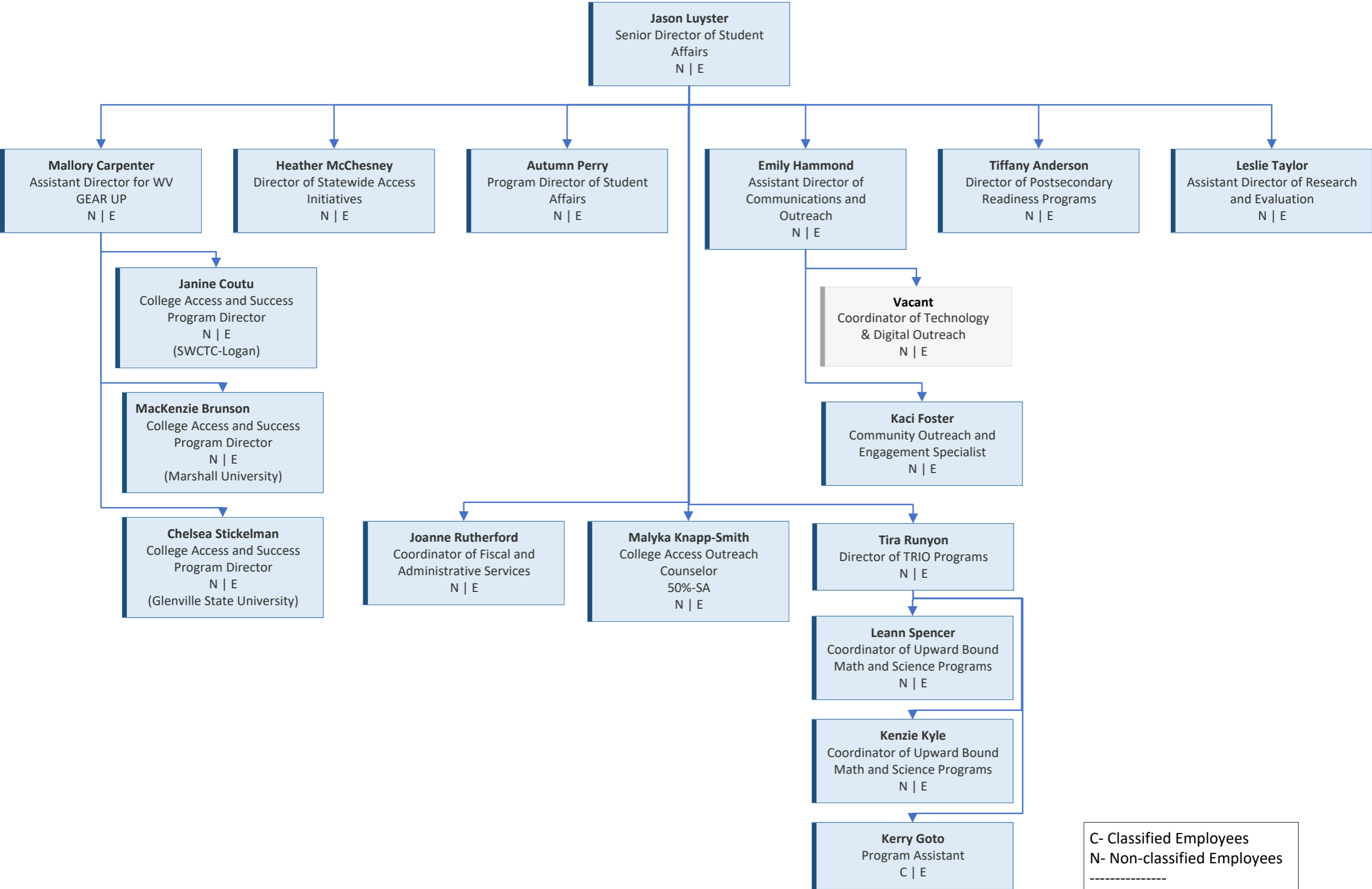
C- Classified Employees  
N- Non-classified Employees  
-----  
E - Exempt  
NE - Non-exempt

# Division of Financial Aid



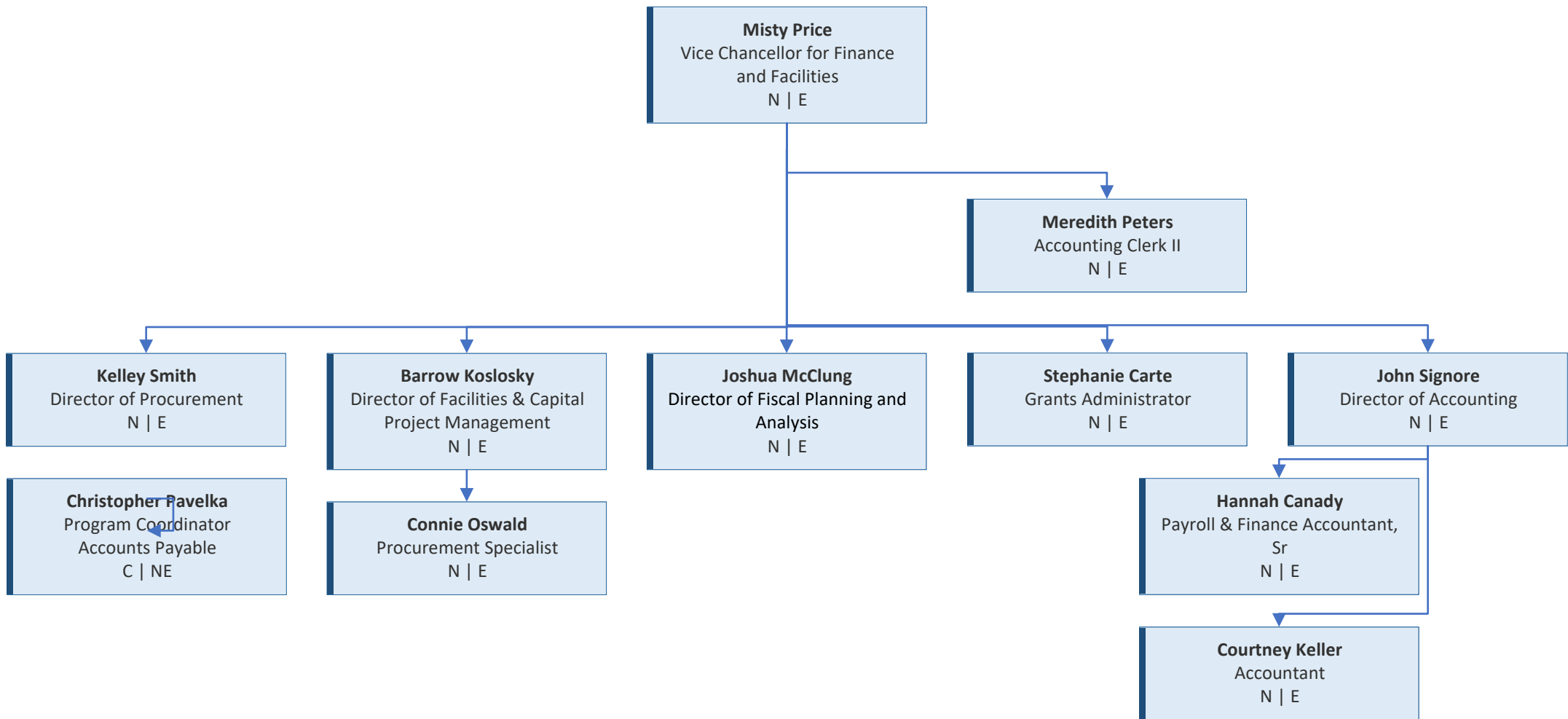
C- Classified Employees  
 N- Non-classified Employees  
 -----  
 E - Exempt  
 NE - Non-exempt

# Division of Student Affairs



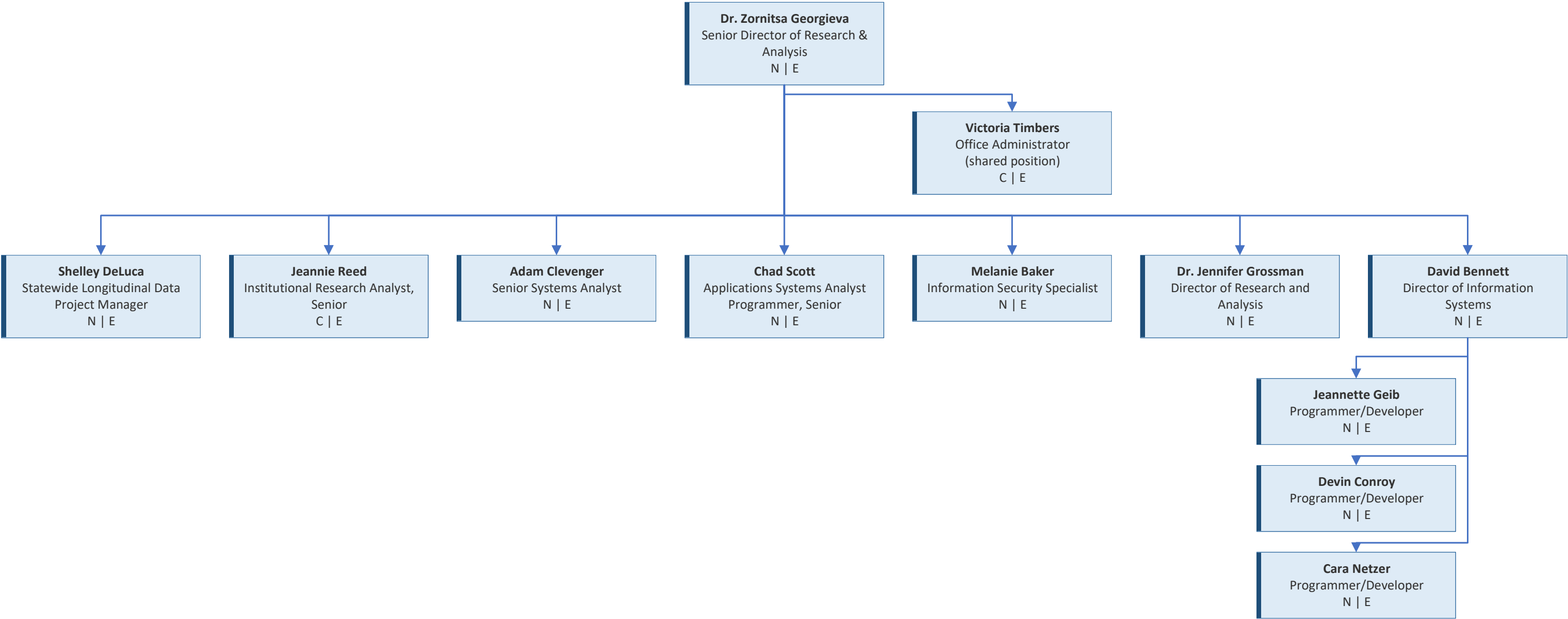
C- Classified Employees  
 N- Non-classified Employees  
 -----  
 E - Exempt  
 NE - Non-exempt

# Division of Finance & Facilities



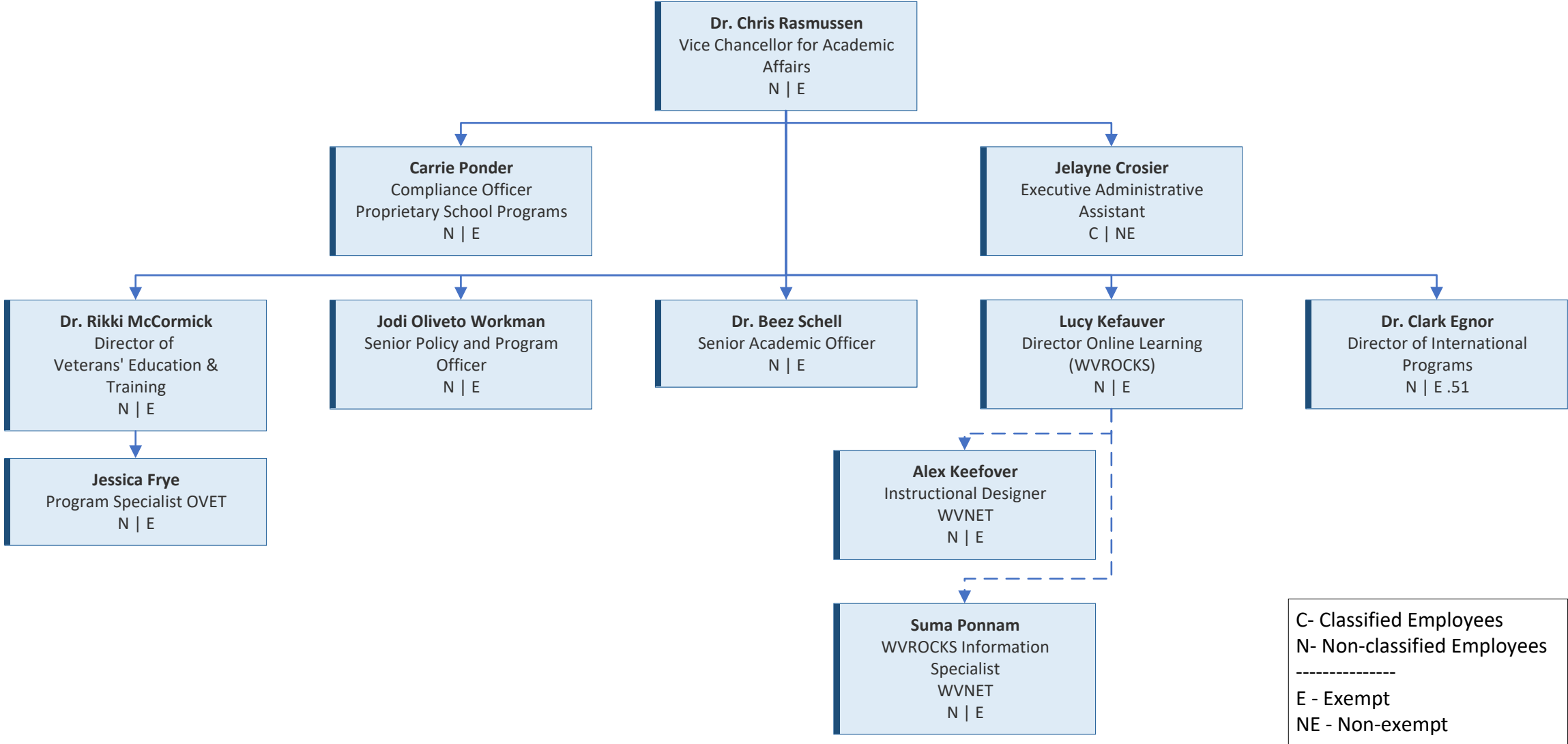
C- Classified Employees  
 N- Non-classified Employees  
 -----  
 E - Exempt  
 NE - Non-exempt

# Division of Research and Analysis

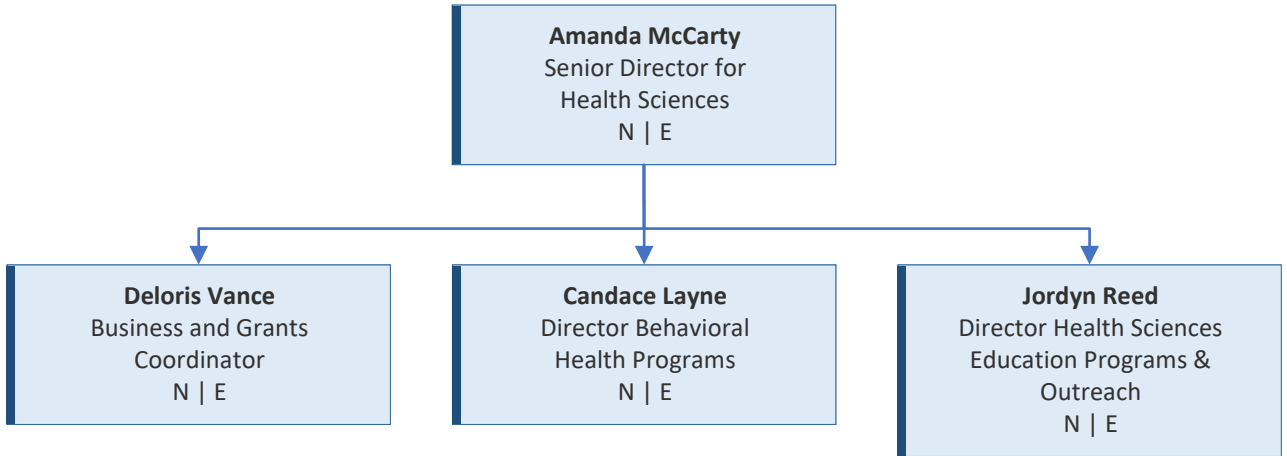


**C- Classified Employees**  
**N- Non-classified Employees**  
 -----  
**E - Exempt**  
**NE - Non-exempt**

# Division of Academic Affairs



# Division of Health Sciences



C- Classified Employees  
N- Non-classified Employees  
-----  
E - Exempt  
NE - Non-exempt

# Legal Division

**Joseph Jenkins**  
General Counsel  
N | E

**Gretchen Murphy**  
Assistant Attorney General  
N | E  
Contracted from AG's Office

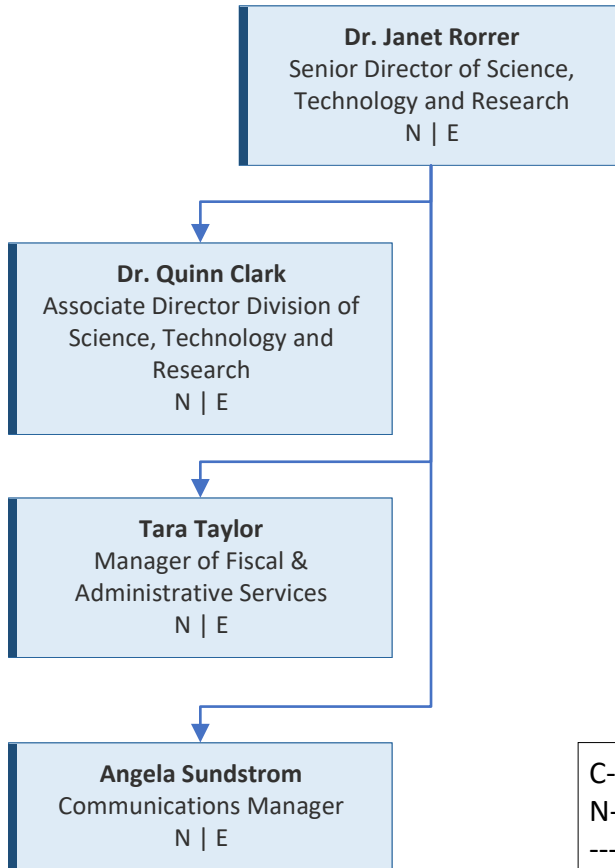
**Victoria Timbers**  
Office Administrator  
(shared position)  
C | E

**Kristi McWhirter**  
Assistant Attorney General  
(Glenville Based)  
N | E  
Contracted from AG's Office

**Sam Spatafore**  
Assistant Attorney General  
(Morgantown Based)  
N | E  
Contracted from AG's Office

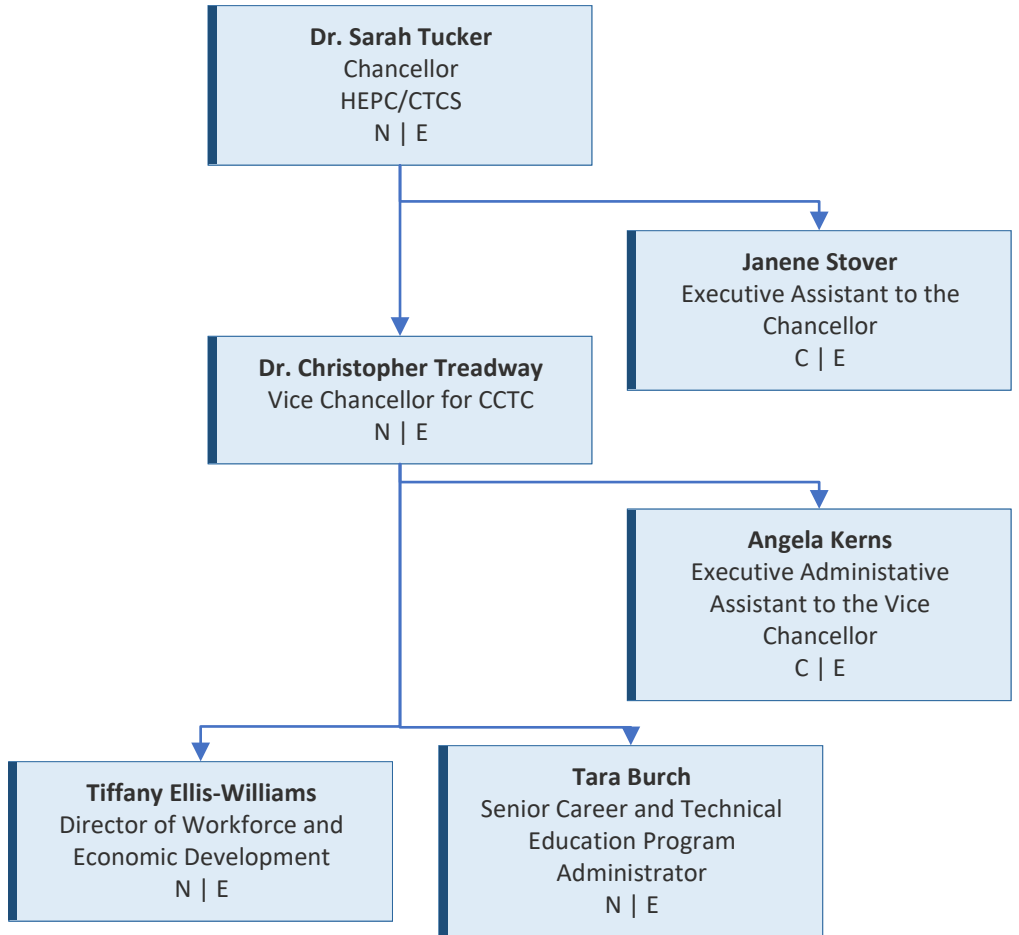
C- Classified Employees  
N- Non-classified Employees  
-----  
E - Exempt  
NE - Non-exempt

# STaR Division: SCIENCE, TECHNOLOGY AND RESEARCH



C- Classified Employees  
N- Non-classified Employees  
-----  
E - Exempt  
NE - Non-exempt

# WV Council for Community and Technical College Education



C- Classified Employees  
N- Non-classified Employees  
-----  
E - Exempt  
NE - Non-exempt